



US Army Corps  
of Engineers.

# AWARDED ACF CONTRACTS



## 38 CONTRACTS

### TABLE OF CONTENTS

1 – TCF CENTER

2 – MISSOURI ACF

3 – ALASKA AIRLINES

4 – WISCONSIN STATE  
FAIR EXPO CENTER

5 – GIBSON MEDICAL  
CENTER

6 – MIYAMURA HIGH  
SCHOOL

7 – MIAMI BEACH  
CONVENTION CENTER

8 – SUBURBAN COLLECTION  
SHOWPLACE

9 – PORTERVILLE  
DEVELOPMENT CENTER

10 – WESTCHESTER COUNTY  
CENTER

11 – UNITED MEDICAL  
CENTER

12 – NEW BRIDGE-BERGEN

13 – METRO SOUTH MEDICAL  
CENTER

14 – SHERMAN HOSPITAL

15 – MCCORMICK PLACE

16 – HAGERSTOWN CORR.  
FACILITY

17 – WESTLAKE HOSPITAL

18 – SUNY STONY BROOK

19 – COLORADO CONVENTION  
CENTER

20 – SUNY OLD WESTBURY

21 – ST. FRANCIS HOSPITAL

22 – ATSA BIYAAZH SCHOOL

23 – NEW BRIDGE BERGEN  
PARKING LOT

24 – JAVITS CENTER

25 – THE RANCH EVENTS  
COMPLEX

26 – CHINLE COMMUNITY  
CENTER

27 – EAST ORANGE GENERAL  
HOSPITAL

28 – WALTER E. WASHINGTON  
CONVENTION CENTER

29 – 210 ARNG REGIONAL  
TRAINING INSTITUTE

30 – INTEGRIS BAPTIST PORT.  
CAMPUS

31 – OSU MEDICAL CENTER

32 – EUGENE RIVER  
AVENUE FACILITY

33 – LOTTER BUILDING  
MILWAUKEE COUNTY

34 – KALISPELL REGIONAL  
MEDICAL CENTER

35 – NASHVILLE GENERAL  
HOSPITAL

36 – ST. LUKE'S MEDICAL  
CENTER

37 – COMMERCIAL  
APPEAL BUILDING

38 – MEMORIAL HOSPITAL

# TCF CENTER – DETROIT, MI

## ARENA TO HEALTHCARE (A2HC)

### Alternate Care Facility Overview

Location: Detroit, MI
MSC: Great Lakes & Ohio River Div. (LRD)
FEMA Region: V
Contractor: Detroit Reg. Conv./COBO Hall
Type: Arena (A2HC)
Patient Type: COVID
Facility Size: 725,000 SF
Bed Capacity: 970
Address: 1 Washington Blvd., Detroit, MI 48226



### Timeline

Assessment MA received	25 MAR 20
Construction MA received	30 MAR 20
Contract Awarded	31 MAR 20
Construction Start	31 MAR 20
Contractual Completion	09 APR 20
Estimated Completion	09 APR 20
Actual Completion	09 APR 20
Total Construction Duration	10 Days
<b>Notes:</b> 100% Complete; First patients arrived on 11 APR 20.	

### Projected Bed Shortfall 07 JUN – 14 JUN



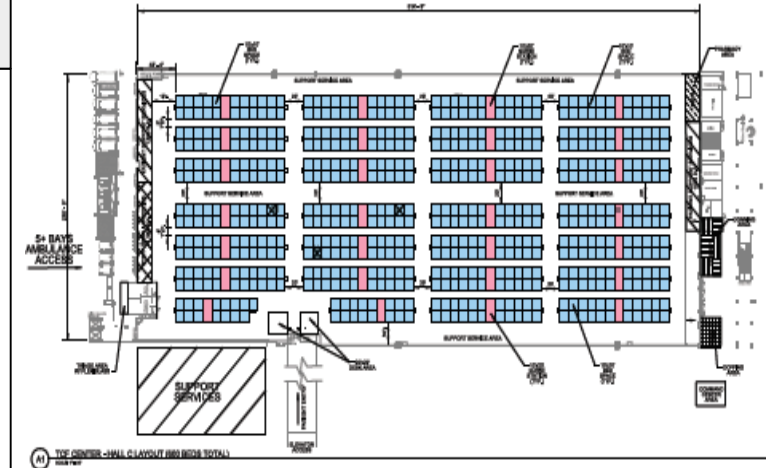
### Plans

**Plans Key:**  
Blue = Patient rooms / beds  
Pink/Purple: Nurse stations

#### Notes:

- \*2 Halls:
  - Hall C (depicted on the right): 600 beds with negative pressure for the entire hall
  - Hall E: 370 beds with negative pressure (no O2) for the entire hall

\*Facility is equipped with oxygen lines and negative pressure.



AT THE CENTER - HALL CLAYOUT (BEDS TOTAL)

### In Progress Photos







US Army Corps  
of Engineers.

# MISSOURI ACF AT FLORISSANT– FLORISSANT, MO

## HOTEL TO HEALTHCARE (H2HC)



### Alternate Care Facility Overview

Location: Florissant, MO
MSC: Northwest Division (NWD)
FEMA Region: VII
Contractor: Tarlton
Type: Hotel (H2HC)
Patient Type: COVID
Facility Size: 45,000 SF
Bed Capacity: 118
Address: 55 Dunn Rd., Florissant, MO 63031



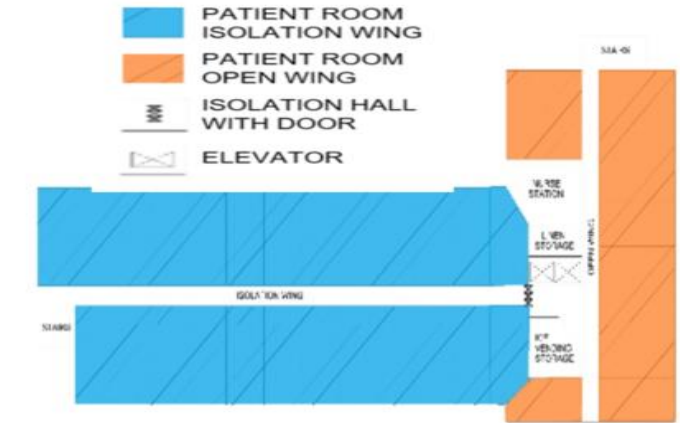
### Plans

#### Plans Key:

Layout of 3<sup>rd</sup> Floor  
Total of 4 floors with similar layout.

#### Notes:

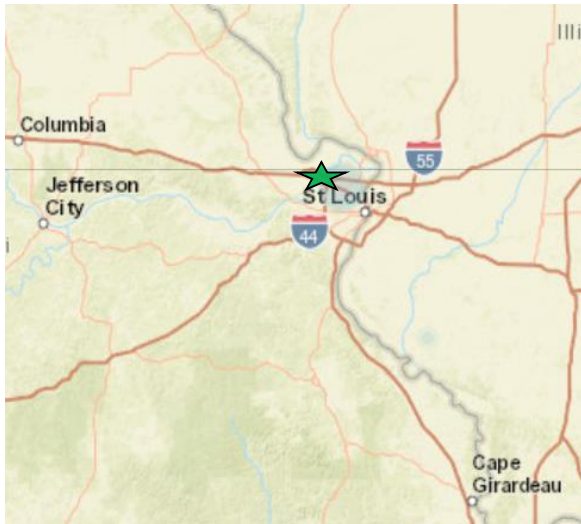
- 118 Patient Units
- 4 Nurse Stations
- 12 Support Areas



### Timeline

Assessment MA received	06 APR 20
Construction MA received	06 APR 20
Contract Awarded	08 APR 20
Construction Start	08 APR 20
Contractual Completion	12 APR 20
Estimated Completion	11 APR 20
Actual Completion	11 APR 20
Total Construction Duration	4 Days
<u>Notes:</u> 100% Complete; First patient admitted 15 APR.	

### Projected Bed Shortfall 07 JUN – 14 JUN



### In Progress Photos



COVID Convalescent Patient Room



MG Toy Meets with Contractors



# ALASKA AIRLINES CENTER – ANCHORAGE, AK

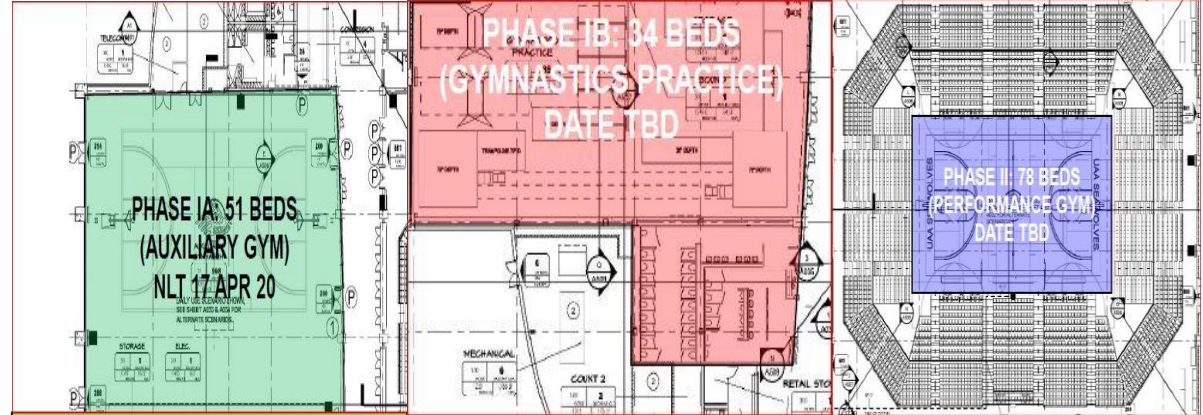
## ARENA TO HEALTHCARE (A2HC)

### Alternate Care Facility Overview

Location: Anchorage, AK
MSC: Pacific Ocean Division (POD)
FEMA Region: X
Contractor: Nesser-Paug/Vick
Type: Arena (A2HC)
Patient Type: COVID
Facility Size: 196k SF
Bed Capacity: 51 (PH. 1A)
Address: 3550 Providence Drive, Anchorage, AK 99501



### Plans

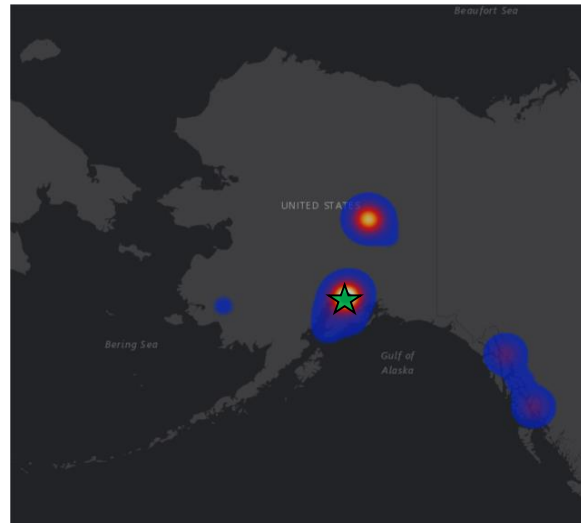


<p><b>PHASE 1A: 51 BEDS (AUXILIARY GYM)</b> NLT 17 APR 20</p>	<p><b>PHASE 1B: 34 BEDS (GYMNASTICS PRACTICE)</b> DATE TBD</p>	<p><b>PHASE 2: 78 BEDS (PERFORMANCE GYM)</b> DATE TBD</p>
<p>Phase 1A: 51 Beds (aux gym) + Staff Clean Area 57 CTR; 6 USACE Employees</p>	<p>Phase 1B: 34 Beds (Gymnastic Practice area)</p>	<p>Phase 2: 78 Beds erected in Performance Gym Area</p>

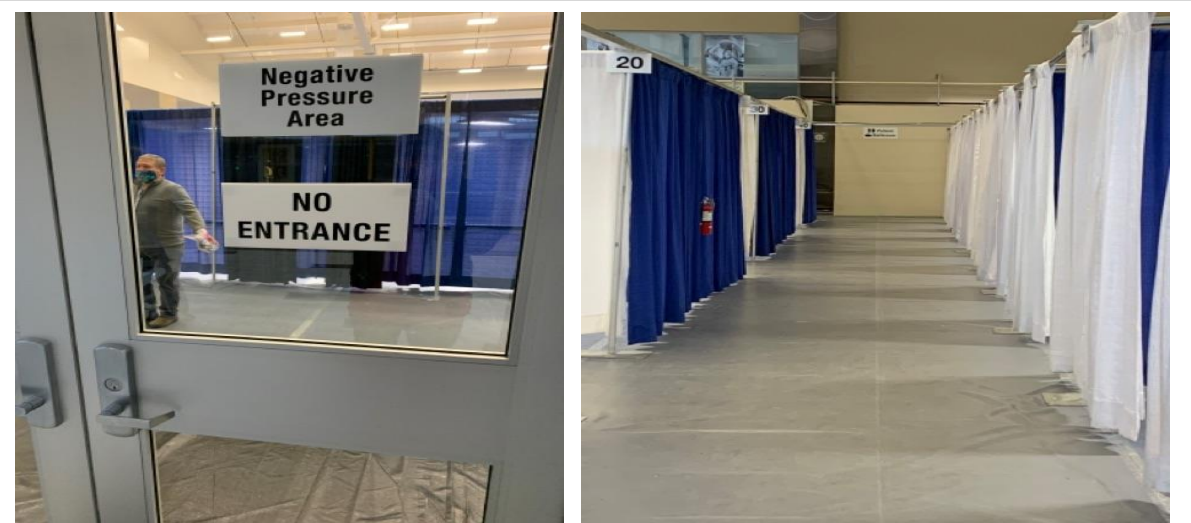
### Timeline

Assessment MA received	27 MAR 20
Construction MA received	07 APR 20
Contract Awarded	09 APR 20 (PH. 1A)
Construction Start	09 APR 20 (PH. 1A)
Contractual Completion	17 APR 20 (PH.1A)
Estimated Completion	17 APR 20 (PH.1A)
Actual Completion	17 APR 20 (PH.1A)
Total Construction Duration	9 Days
<b>Notes:</b> 100% Complete	

### Heat Map COVID-19



### In Progress Photos







US Army Corps  
of Engineers.

# WISCONSIN STATE FAIR EXPO CENTER – WEST ALLIS, WI

## ARENA TO HEALTHCARE (A2HC)



### Alternate Care Facility Overview

Location: Wisconsin State Fair Expo Center

MSC: Mississippi Valley Division (MVD)  
Executing: Great Lakes & River Division (LRD)

FEMA Region: V

Contractor: Gilbane Building Company

Type: Arena (A2HC)

Patient Type: COVID

Facility Size: 199k SF

Bed Capacity: 530

Address: 640 S. 84<sup>th</sup> St., West Allis, WI



### Plans

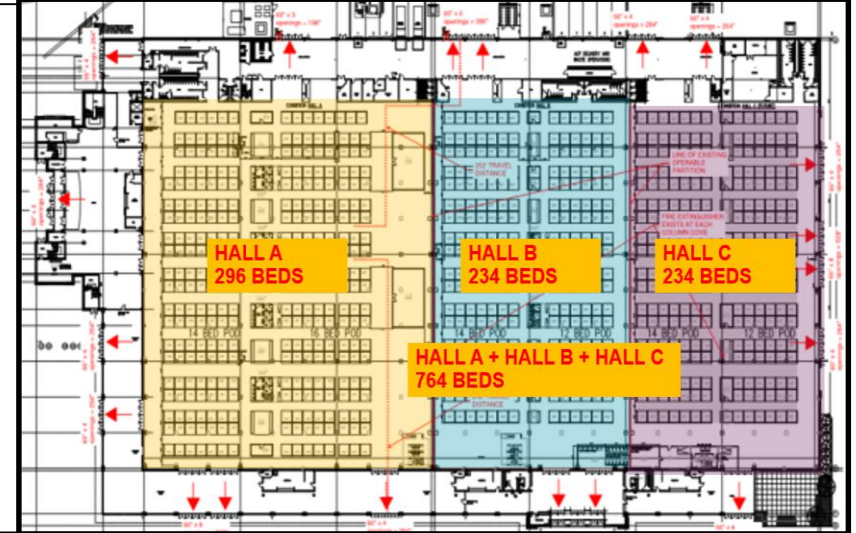
#### Notes:

Floor Plan Layout of ACF at WI State Fairgrounds Exposition Hall.

Hall C is shown for Design only so it is not factored into the overall bed capacity.

296 beds with inline oxygen.

234 beds with bottled oxygen.

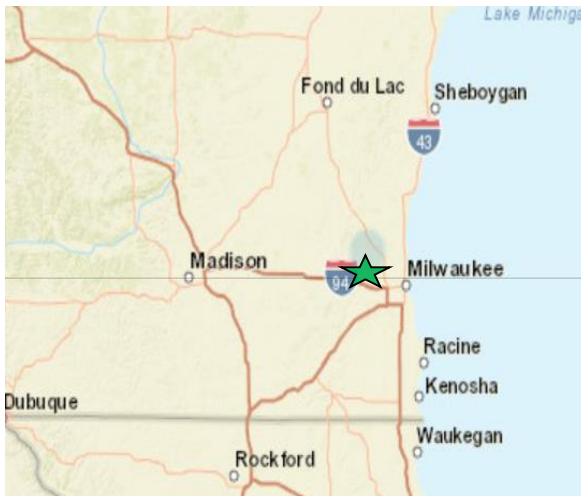


### Timeline

Assessment MA received	29 MAR 20
Construction MA received	07 APR 20
Contract Awarded	07 APR 20
Construction Start	08 APR 20
Contractual Completion	18 APR 20
Estimated Completion	18 APR 20
Actual Completion	17 APR 20
Total Construction Duration	10 Days

Notes: 100% Complete

### Projected Bed Shortfall 07 JUN – 14 JUN



### In Progress Photos



### Alternate Care Facility Overview

Location: Albuquerque, NM
MSC: South Pacific Division (SPD)
FEMA Region: VI
Contractor: Weil Construction, Inc.
Type: Hotel (H2HC)
Patient Type: COVID
Facility Size: 160,000 SF
Bed Capacity: 200
Address: 5400 Gibson Blvd. SE, Albuquerque, NM 87109



### Plans

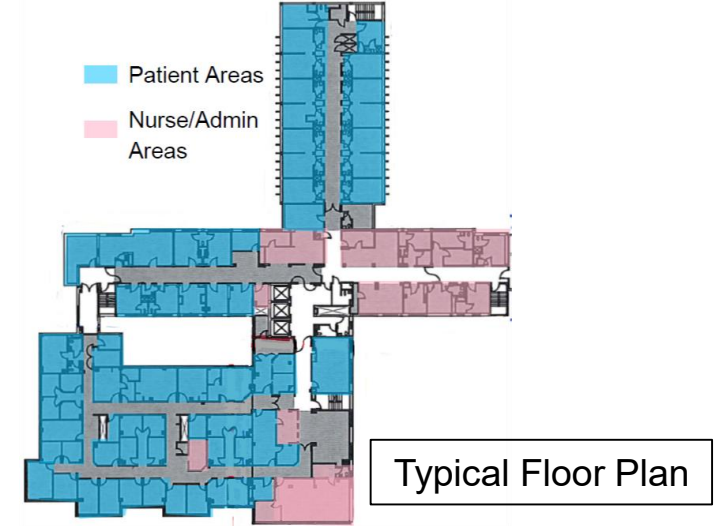
**Notes:**

20 acute COVID Beds  
180 non-acute COVID Beds

Converted and restored unoccupied sections of five floors of an Inactive Hospital

Installed HVAC systems to achieve negative pressure on all floors

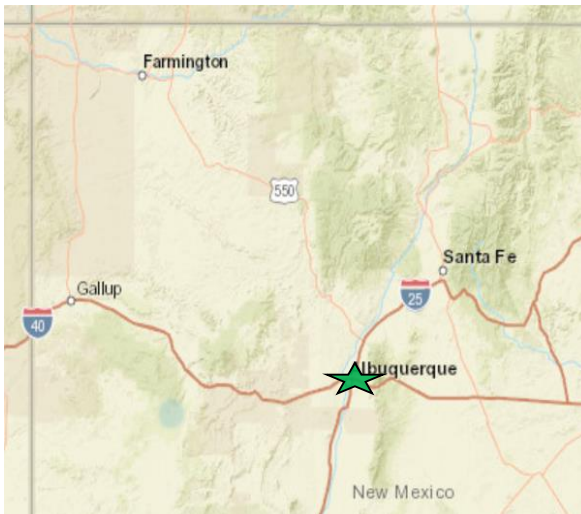
Oxygen lines will run to patient rooms on two floors



### Timeline

Assessment MA received	17 MAR 20
Construction MA received	01 APR 20
Contract Awarded	03 APR 20
Construction Start	04 APR 20
Contractual Completion	18 APR 20
Estimated Completion	18 APR 20
Actual Completion	18 APR 20
Total Construction Duration	15 Days
<b>Notes:</b> 100% Complete;	

### Projected Bed Shortfall 07 JUN – 14 JUN



### In Progress Photos





# MIYAMURA HIGH SCHOOL – GALLUP, NM

## ARENA TO HEALTHCARE (A2HC)

### Alternate Care Facility Overview

Location: Gallup, NM
MSC: South Pacific Division (SPD)
FEMA Region: VI
Contractor: Four Winds Joint Venture
Type: Arena (A2HC)
Patient Type: COVID
Facility Size: 12,000 SF
Bed Capacity: 60
Address: 680 Boardman Ave., Gallup, NM 87301



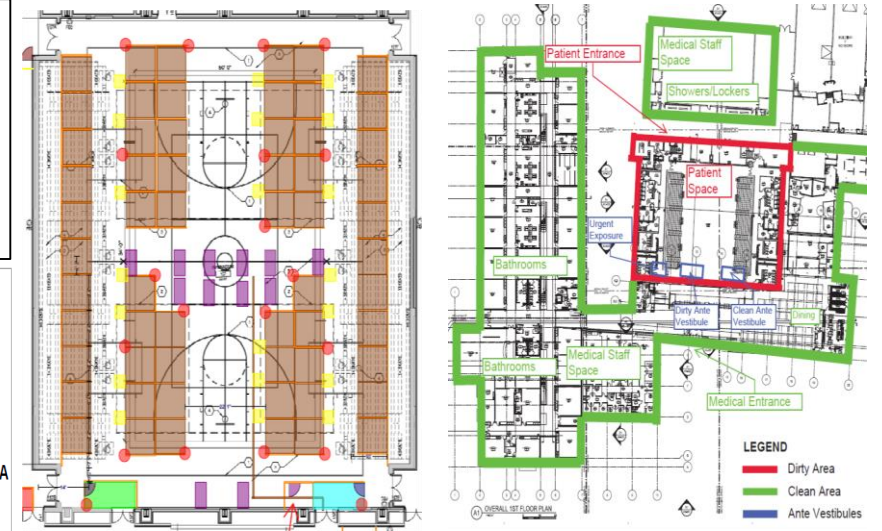
### Plans

#### Notes:

Gym negatively pressurized to safely house patients

Oxygen lines installed to each patient pod

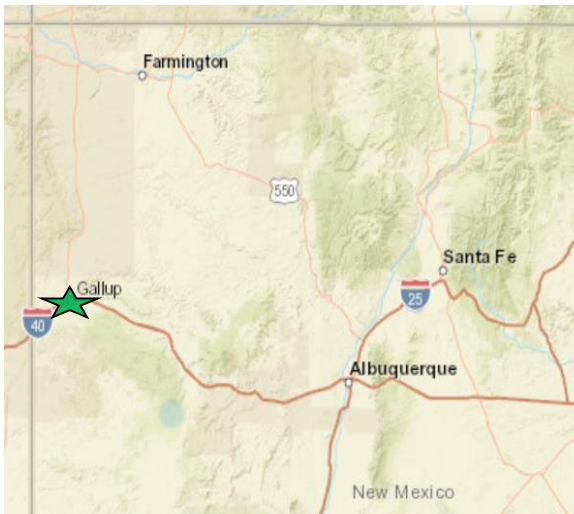
- 2 - Clean Vestibule 14'x6' - 1 EA
- 3 - Dirty Vestibule 14'x6' - 1 EA
- 6 - Nurse Station - 12 EA
- 7 - 6' Walkway - 276 LF
- 8 - Temporary Walls - 1,056 LF
- 9 - 5' Walkway - 105 LF
- 12 - 9' Walkway - 189 LF
- 13 - Decontamination Vestibule - 99 SF
- 14 - Handwash Sink 3' into aisle way max - 20 EA
- 15 - Vestibule Door - 5 EA
- 21 - Patient Room 8'x8' - 60 EA



### Timeline

Assessment MA received	17 MAR 20
Construction MA received	04 APR 20
Contract Awarded	05 APR 20
Construction Start	06 APR 20
Contractual Completion	20 APR 20
Estimated Completion	19 APR 20
Actual Completion	19 APR 20
Total Construction Duration	14 Days

### Projected Bed Shortfall 07 JUN – 14 JUN



### In Progress Photos



Notes: 100% Complete;





US Army Corps  
of Engineers.

# MIAMI BEACH CONVENTION CENTER – MIAMI BEACH, FL

## ARENA TO HEALTHCARE (A2HC)



### Alternate Care Facility Overview

Location: Miami Beach, FL
MSC: South Atlantic Division (SAD)
FEMA Region: IV
Contractor: The Robins & Morton Group
Type: Arena (A2HC)
Patient Type: COVID
Facility Size: 1.4 M SF (overall)
Bed Capacity: 450
Address: 1901 Convention Center Drive, Miami Beach, FL 33139



### Timeline

Assessment MA received	17 MAR 20
Construction MA received	04 APR 20
Contract Awarded	06 APR 20
Construction Start	08 APR 20
Contractual Completion	20 APR 20
Estimated Completion	20 APR 20
Actual Completion	19 APR 20
Total Construction Duration	12 Days
<b>Notes:</b> 100% Complete; Completed 5 days early.	

### Projected Bed Shortfall 07 JUN – 14 JUN



### Plans

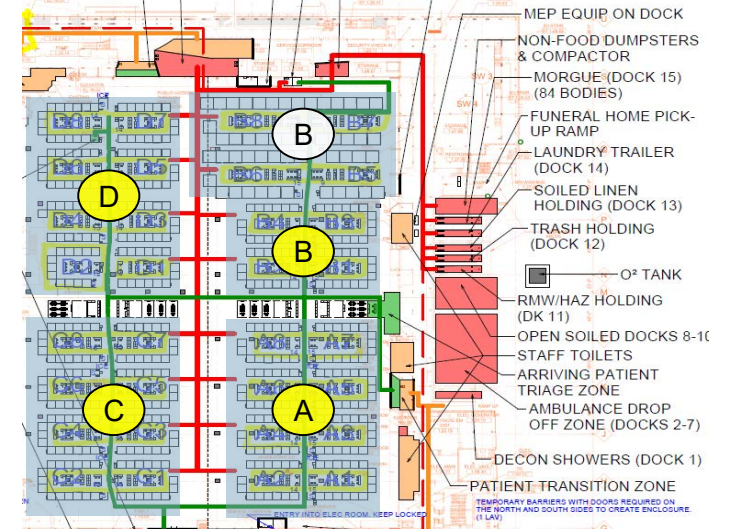
#### Notes:

Zones A, C, D, and half of B total 400 COVID-19 acute care pods

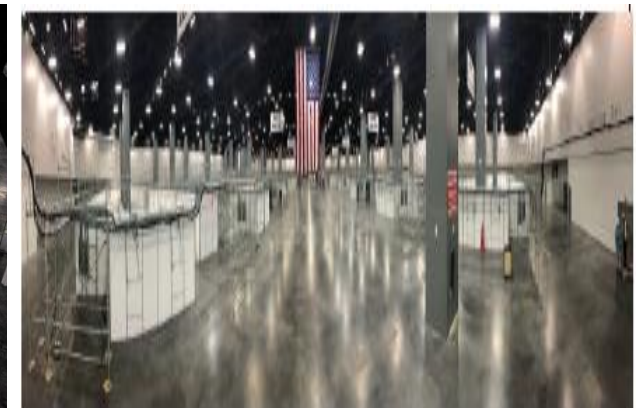
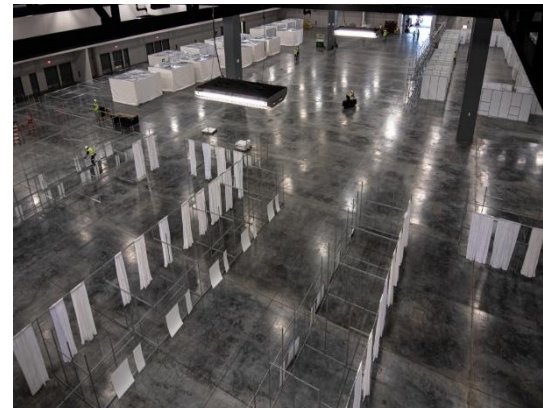
Top half of Zone B totals 50 COVID-19 ICU level isolation pods

#### Key:

- Acute Care
- ICU Care



### In Progress Photos



Complete Facility



# SUBURBAN COLLECTION SHOWPLACE – NOVI, MI

## ARENA TO HEALTHCARE (A2HC)

### Alternate Care Facility Overview

Location: Novi, MI
MSC: Great Lakes and Rivers Division (LRD)
FEMA Region: V
Contractor: Gilbane Federal
Type: Arena (A2HC)
Patient Type: COVID
Facility Size: 250k SF
Bed Capacity: 250
Address: 46100 Grand River Ave., Novi, MI 48374



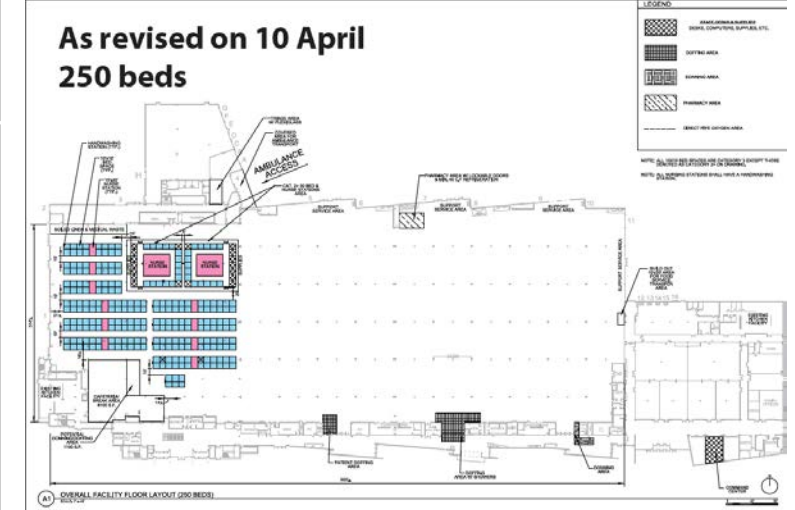
### Plans

**Plans Key:**  
Blue = Patient rooms / beds  
Pink/Purple: Nurse stations

**Notes:**  
250 patient units including plumbed oxygen.

12 Nurse Stations

900 SF Built-In Pharmacy  
\*Facility is equipped with oxygen lines and negative pressure.



### Timeline

Assessment MA received	30 MAR 20
Construction MA received	05 APR 20
Contract Awarded	05 APR 20
Construction Start	06 APR 20
Contractual Completion	20 APR 20
Estimated Completion	20 APR 20
Actual Completion	20 APR 20
Total Construction Duration	15 Days

Notes: 100% Complete; Date Patients Arrived: 24 APR 20.

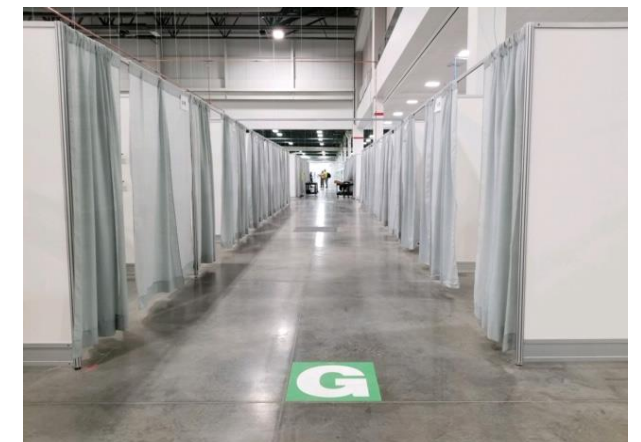
### Projected Bed Shortfall 07 JUN – 14 JUN



### In Progress Photos



National Guard Leadership Tour



Completed Facility Signage





# PORTERVILLE DEVELOPMENT CENTER – PORTERVILLE, CA

## HOTEL TO HEALTHCARE (H2HC)



US Army Corps  
of Engineers.

### Alternate Care Facility Overview

Location: Porterville, CA
MSC: South Pacific Division (SPD)
FEMA Region: Region IX
Contractor: Herman Construction Group, Inc.
Type: Hotel (H2HC)
Patient Type: COVID
Facility Size: Varies
Bed Capacity: 246
Address: 26501 Ave. 140, Porterville, CA 93257



### Plans

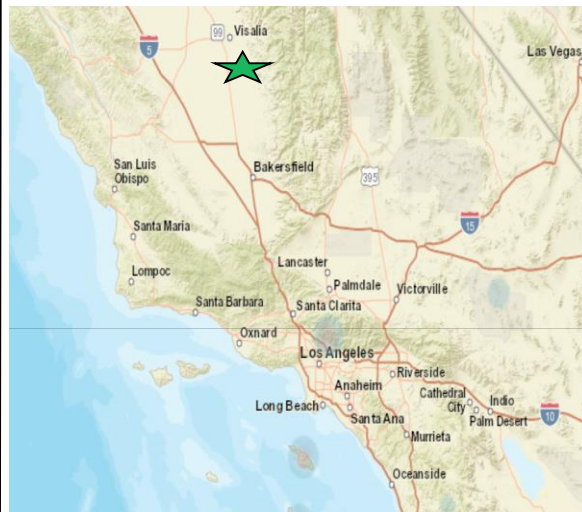
**Notes:**  
6 buildings with an average of 41 beds per building



### Timeline

Assessment MA received	24 MAR 20
Construction MA received	02 APR 20
Contract Awarded	05 APR 20
Construction Start	08 APR 20
Contractual Completion	21 APR 20
Estimated Completion	21 APR 20
Actual Completion	21 APR 20
Total Construction Duration	14 Days
<b>Notes:</b> 100% Complete;	

### Projected Bed Shortfall 07 JUN – 14 JUN



### In Progress Photos







US Army Corps  
of Engineers.

# WESTCHESTER COUNTY CENTER – WHITE PLAINS, NY

## ARENA TO HEALTHCARE (A2HC)



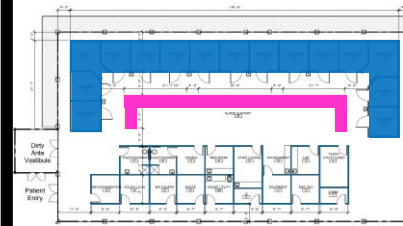
### Alternate Care Facility Overview

Location: White Plains, NY
MSC: North Atlantic Division (NAD)
FEMA Region: II
Contractor: Haugland Energy Group, LLC.
Type: Arena (A2HC)
Patient Type: COVID
Facility Size: 60,000 SF
Bed Capacity: 110
Address: 198 Central Avenue, White Plains, NY 10606



### Plans

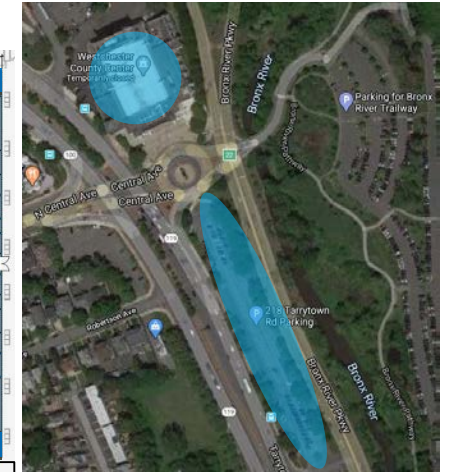
Notes: Site plan - upper location interior with 54 beds - lower location new temporary tents with 56 beds.  
Floor plans: blue – patient rooms; pink - nurse stations



Tent layout



Interior layout



### Timeline

Assessment MA received	18 MAR 20
Construction MA received	23 MAR 20
Contract Awarded	27 MAR 20
Construction Start	27 MAR 20
Contractual Completion	22 APR 20
Estimated Completion	22 APR 20
Actual Completion	22 APR 20
Total Construction Duration	27 Days

### Projected Bed Shortfall 07 JUN – 14 JUN



### In Progress Photos



Tent Build Out



Interior Build Out

Notes: 100% Complete



### Alternate Care Facility Overview

Location: Washington, D.C.
MSC: North Atlantic Division (NAD)
FEMA Region: III
Contractor: Patriot
Type: Arena (A2HC)
Patient Type: COVID
Facility Size: 140,000 SF
Bed Capacity: 6 CMS units
Address: 1310 Southern Ave SE, Washington, DC 20032

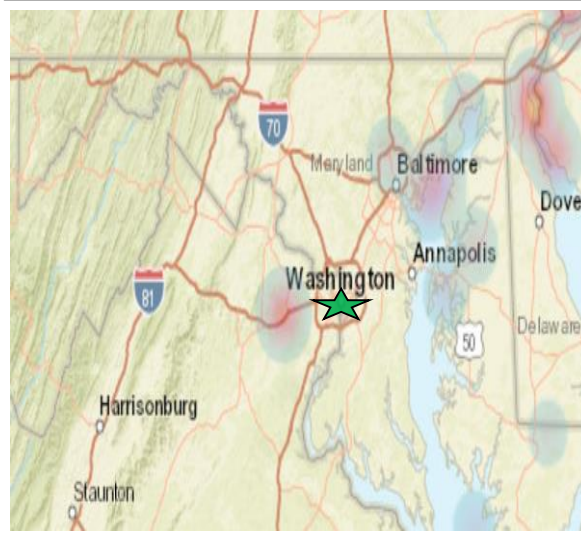


### Timeline

Assessment MA received	N/A
Construction MA received	07 APR 20
Contract Awarded	08 APR 20
Construction Start	09 APR 20
Contractual Completion	22 APR 20
Estimated Completion	22 APR 20
Actual Completion	22 APR 20
Total Construction Duration	14 Days

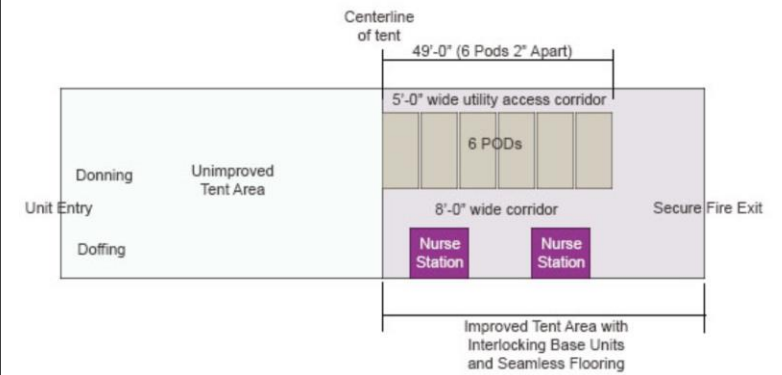
**Notes:** 100% Complete; DC is working on the wrap around services and finishing up the site. Estimated opening of the facility is mid May.

### Projected Bed Shortfall 07 JUN – 14 JUN



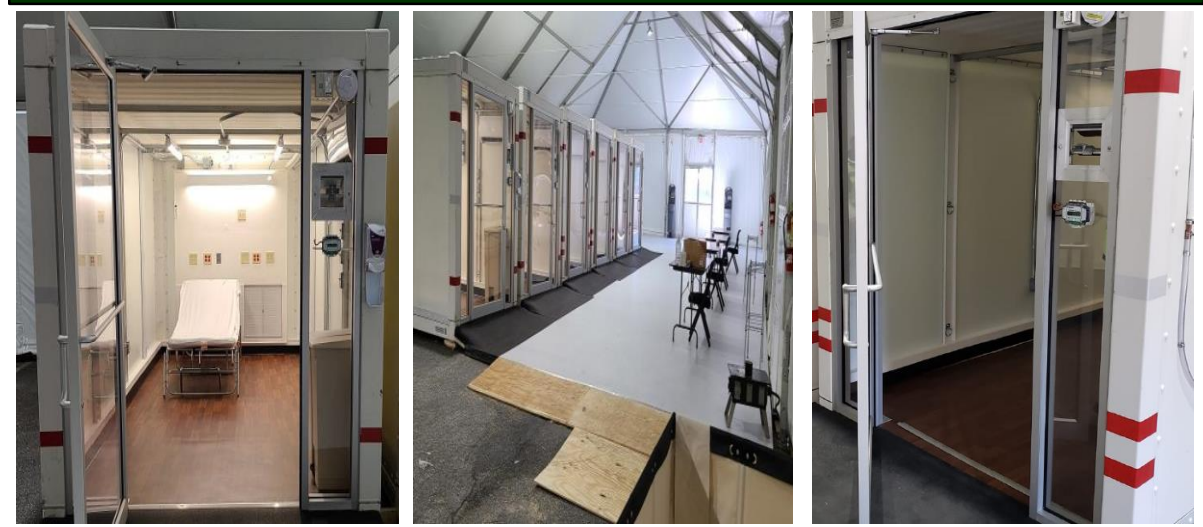
### Plans

- Plans Key:**
- 6 x CMS Set up outside of the UMC in the parking lot.
  - CMS's to be set up inside of a tent.
- Notes:**
- 06MAY20: Contractor sent Release of Claims to NAB
  - 07MAY20 – Present: Working on final close out documents



**Submitted Layout for Inside of the Tent – Nurses Stations and Wrap Around Services are being Completed by City of Washington, DC**

### In Progress Photos







US Army Corps  
of Engineers.

# NEW BRIDGE-BERGEN MEDICAL CENTER - PARAMUS, NJ

## ARENA TO HEALTHCARE (A2HC)



### Alternate Care Facility Overview

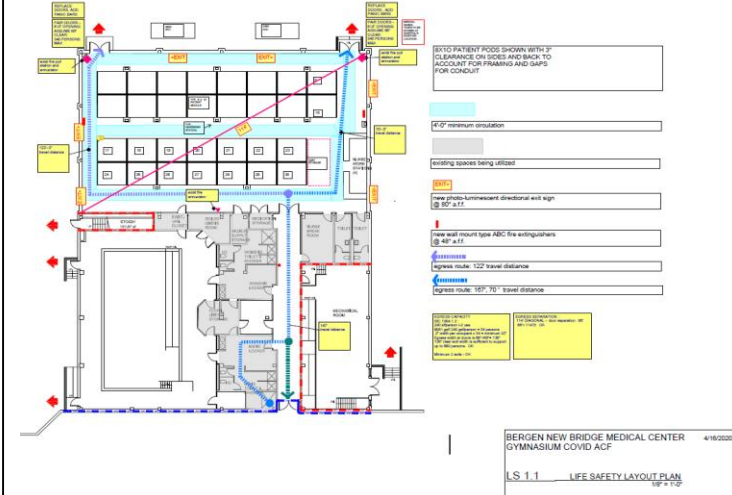
Location: Paramus, NJ
MSC: North Atlantic Division (NAD)
FEMA Region: II
Contractor: CONTI Federal Services, LLC.
Type: Arena (A2HC)
Patient Type: NON-COVID
Facility Size: 6,000 SF
Bed Capacity: 30
Address: 230 E Ridgewood Ave, Paramus, NJ 07652



### Plans

#### Notes

Gym is planned to hold 30 beds.



### Timeline

Assessment MA received	23 MAR 20
Construction MA received	29 MAR 20
Contract Awarded	08 APR 20
Construction Start	09 APR 20
Contractual Completion	23 APR 20
Estimated Completion	23 APR 20
Actual Completion	22 APR 20
Total Construction Duration	14 Days

### Projected Bed Shortfall 07 JUN – 14 JUN



### In Progress Photos



Notes: 100% Complete;





US Army Corps  
of Engineers.

# METRO SOUTH MEDICAL CENTER – BLUE ISLAND, IL

## HOTEL TO HEALTHCARE (H2HC)



### Alternate Care Facility Overview

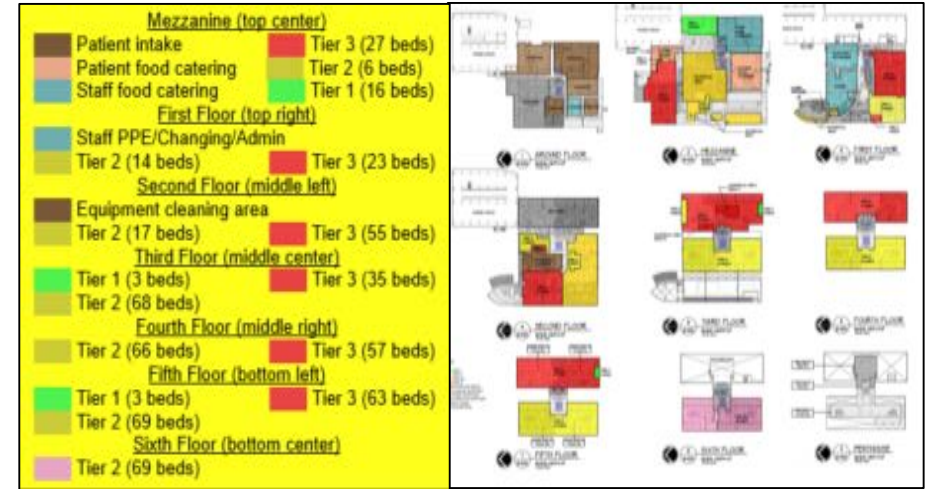
Location: Blue Island, IL
MSC: Great Lakes & Ohio River Div. (LRD)
FEMA Region: V
Contractor: Clark Construction Group, LLC.
Type: Hotel (H2HC)
Patient Type: COVID
Facility Size: 281,256 SF
Bed Capacity: 585
Address: 12935 S Gregory St., Blue Island, IL 60406



### Plans

Notes:

Plans have been adjusted resulting in a slightly lower bed count than what is depicted



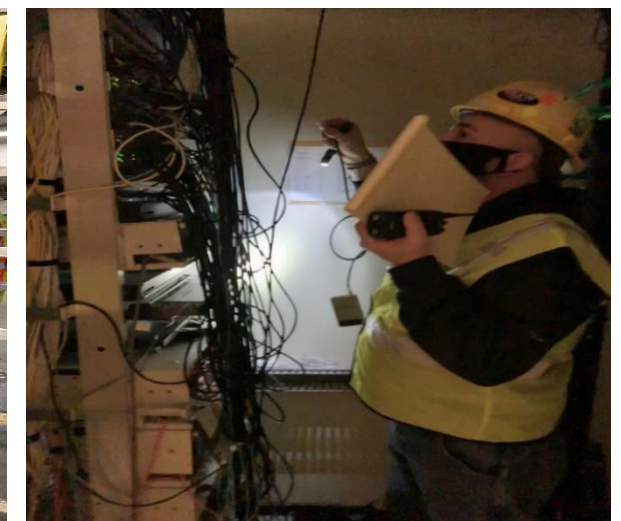
### Timeline

Assessment MA received	22 MAR 20
Construction MA received	27 MAR 20
Contract Awarded	29 MAR 20
Construction Start	30 MAR 20
Contractual Completion	24 APR 20
Estimated Completion	23 APR 20
Actual Completion	23 APR 20
Total Construction Duration	25 Days

### Projected Bed Shortfall 07 JUN – 14 JUN



### In Progress Photos



Notes: 100% Complete



# SHERMAN HOSPITAL – ELGIN, IL

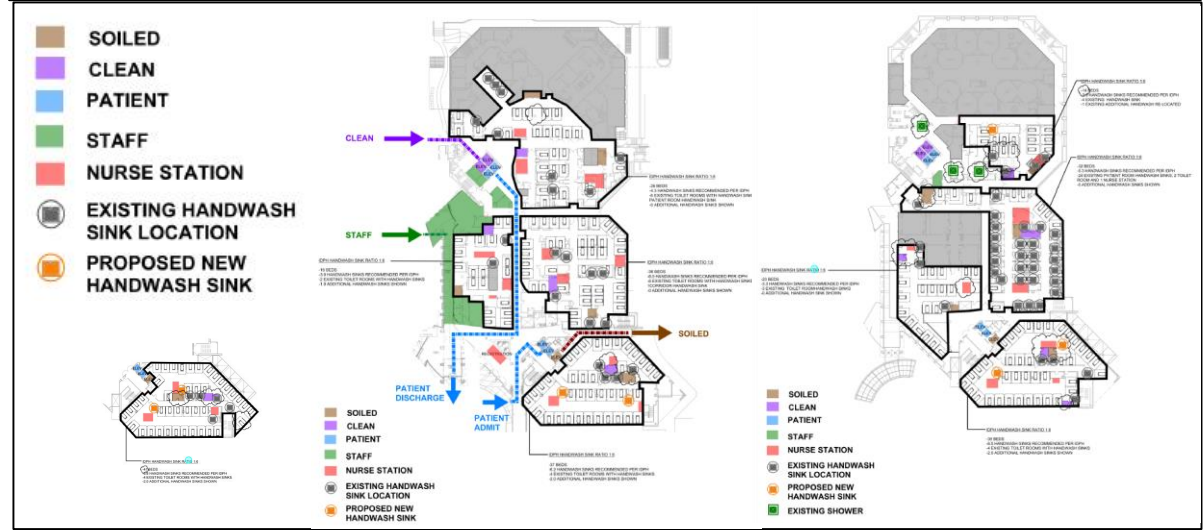
## HOTEL TO HEALTHCARE (H2HC)

### Alternate Care Facility Overview

Location: Elgin, IL
MSC: Great Lakes & Ohio River Div. (LRD)
FEMA Region: V
Contractor: Turner Construction Company
Type: Hotel (H2HC)
Patient Type: COVID
Facility Size: 371,000 SF
Bed Capacity: 274
Address: 901 Center St., Elgin, IL 60120



### Plans



### Timeline

Assessment MA received	22 MAR 20
Construction MA received	27 MAR 20
Contract Awarded	29 MAR 20
Construction Start	30 MAR 20
Contractual Completion	24 APR 20
Estimated Completion	23 APR 20
Actual Completion	23 APR 20
Total Construction Duration	25 Days
<u>Notes:</u> 100% Complete	

### Projected Bed Shortfall 07 JUN – 14 JUN



### In Progress Photos





# MCCORMICK PLACE – CHICAGO, IL

## ARENA TO HEALTHCARE (A2HC)

### Alternate Care Facility Overview

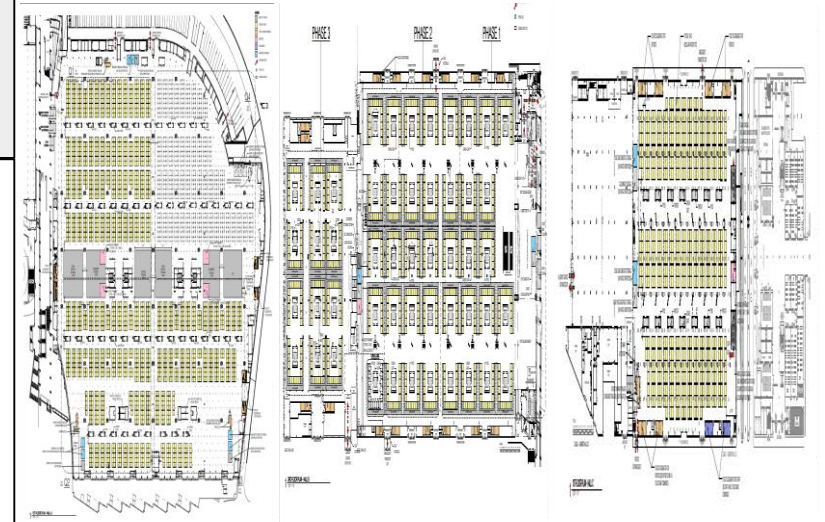
Location: Chicago, IL
MSC: Great Lakes & Ohio River Div. (LRD)
FEMA Region: V
Contractor: Metro. Pier and Expo. Authority
Type: Arena (A2HC)
Patient Type: COVID
Facility Size: 1.5M SF
Bed Capacity: 3,000
Address: 2301 S King Dr., Chicago, IL 60616



### Plans

**Plans Key:**  
 Yellow= Patient pods  
 Pink = Medical areas  
 Orange = Toilets

**Notes:**  
 Hall A has 1750 low acuity beds  
 Hall B has 750 medium acuity beds  
 Hall C has 500 low acuity beds



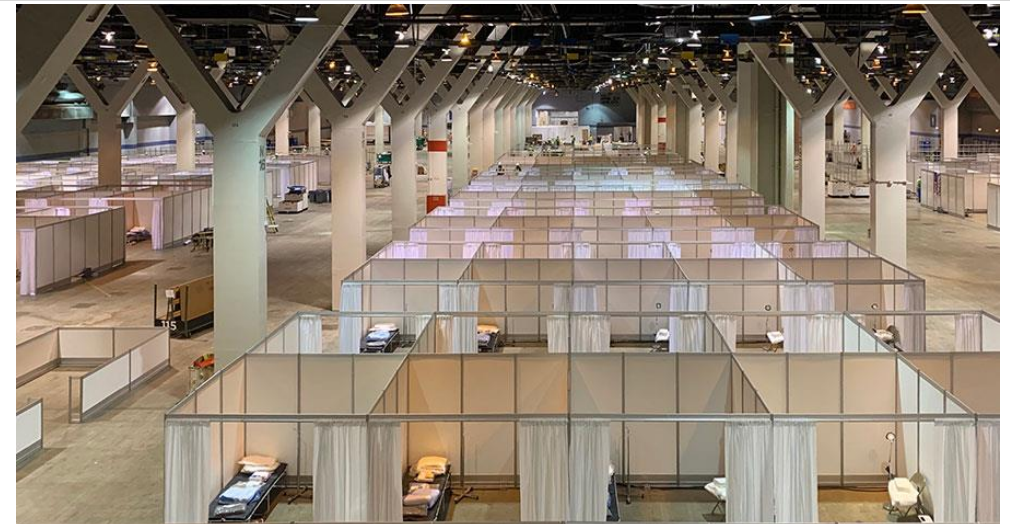
### Timeline

Assessment MA received	22 MAR 20
Construction MA received	26 MAR 20
Contract Awarded	28 MAR 20
Construction Start	29 MAR 20
Contractual Completion	24 APR 20
Estimated Completion	24 APR 20
Actual Completion	23 APR 20
Total Construction Duration	26 Days

### Projected Bed Shortfall 07 JUN – 14 JUN



### In Progress Photos



**Notes:** 100% Complete; First patient admitted 15 APR 20.





US Army Corps  
of Engineers.

# HAGERSTOWN CORR. FACILITY – HAGERSTOWN, MD

## HOTEL TO HEALTHCARE (H2HC)



### Alternate Care Facility Overview

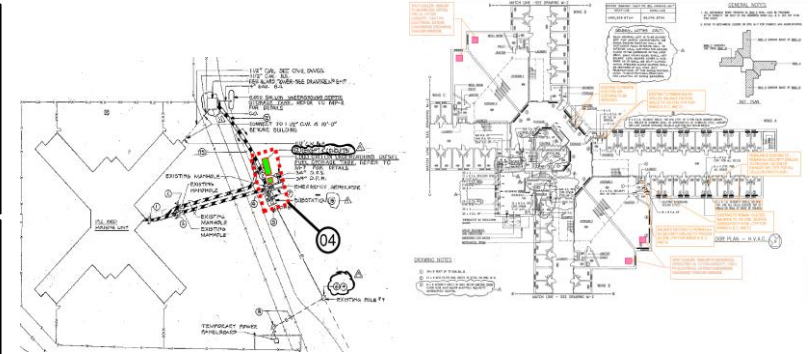
Location: Hagerstown, MD
MSC: North Atlantic Division (NAD)
FEMA Region: III
Contractor: Clark Construction Group, LLC.
Type: Hotel (H2HC)
Patient Type: COVID
Facility Size: 61,000 SF
Bed Capacity: 0
Address: 18601 Roxbury Rd Hagerstown, MD 21746



### Plans

**Plans Key:**  
Refurbish closed correctional facility for COVID prisoners.

- Notes**
- Termination letter was issued to the contractor
  - 23 APR 20. Original plan was to provide a bed capacity of 192.



### Timeline

Assessment MA received	17 MAR 20
Construction MA received	03 APR 20
Contract Awarded	10 APR 20
Construction Start	13 APR 20
Contractual Completion	24 APR 20
Estimated Completion	24 APR 20
Actual Completion	24 APR 20
Total Construction Duration	12 Days

### Projected Bed Shortfall 07 JUN – 14 JUN



### In Progress Photos

**Last 24 and Next 24:**  
Finalize contract documents by beginning of next week (week of 11 MAY).



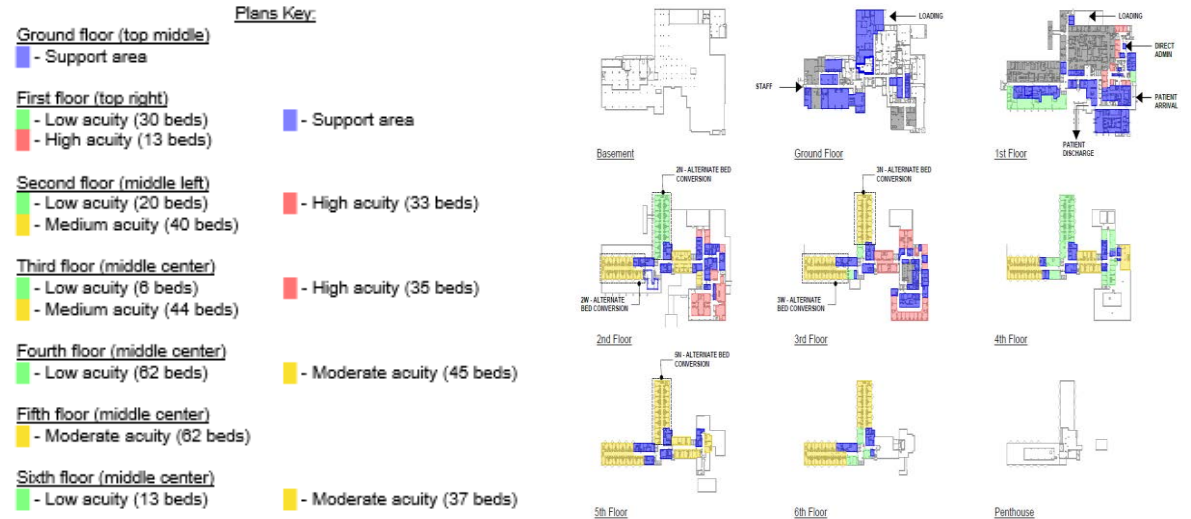
**Notes:** At 25% Construction Completion, project was handed over to the state to complete construction..

### Alternate Care Facility Overview

Location: Melrose Park, IL
MSC: Great Lakes & Ohio River Div. (LRD)
FEMA Region: V
Contractor: Bulley & Andrews
Type: Hotel (H2HC)
Patient Type: COVID
Facility Size: 840,000 SF
Bed Capacity: 430
Address: 12225 W Lake St., Melrose Park, IL 60160



### Plans



### Timeline

Assessment MA received	22 MAR 20
Construction MA received	22 MAR 20
Contract Awarded	05 APR 20
Construction Start	06 APR 20
Contractual Completion	24 APR 20
Estimated Completion	24 APR 20
Actual Completion	24 APR 20
Total Construction Duration	19 Days
<b>Notes:</b> 100% Complete; 90 inline oxygen, med gas, and vacuum 218 inline oxygen and vacuum	

### Projected Bed Shortfall 07 JUN – 14 JUN



### In Progress Photos



View of High/Moderate Acuity Patient Space



# SUNY STONY BROOK – STONY BROOK, NY

## ARENA TO HEALTHCARE (A2HC)

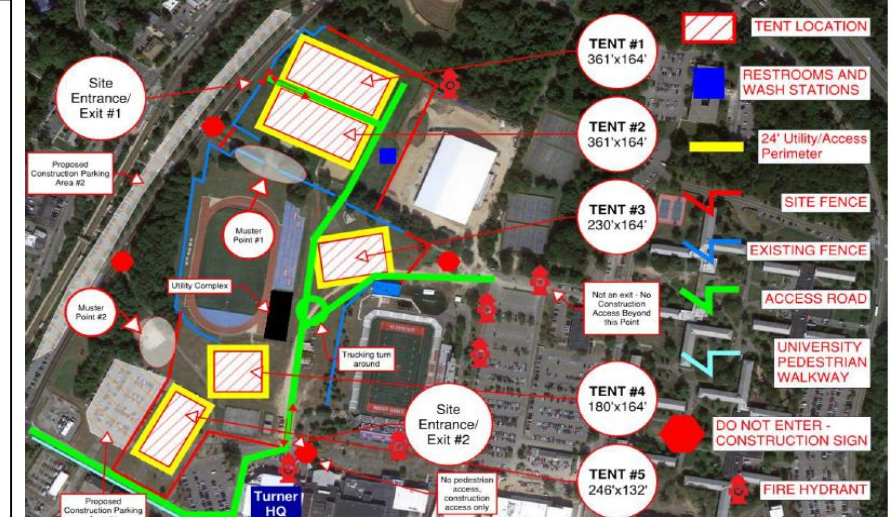
### Alternate Care Facility Overview

Location: Stony Brook, NY
MSC: North Atlantic Division (NAD)
FEMA Region: II
Contractor: Turner Construction Company
Type: Arena (A2HC)
Patient Type: COVID & NON-COVID
Facility Size: 255,676 SF
Bed Capacity: 1,028
Address: 100 Nichols Road, Stony Brook, NY 11794



### Plans

- Notes:**
- Bed Breakdown**
  - 270 COVID,
  - 758 Non-COVID
  - Final walkthrough with FEMA and NYS occurred on 25 APR.



### Timeline

Assessment MA received	18 MAR 20
Construction MA received	23 MAR 20
Contract Awarded/NTP	29 MAR 20
Construction Start	29 MAR 20
Contractual Completion	24 APR 20
Estimated Completion	26 APR 20
Actual Completion	26 APR 20
Total Construction Duration	29 Days
<b>Notes:</b> 100% Complete	

### Projected Bed Shortfall 07 JUN – 14 JUN



### In Progress Photos







# COLORADO CONVENTION CENTER – DENVER, COLORADO

## ARENA TO HEALTHCARE (A2HC)



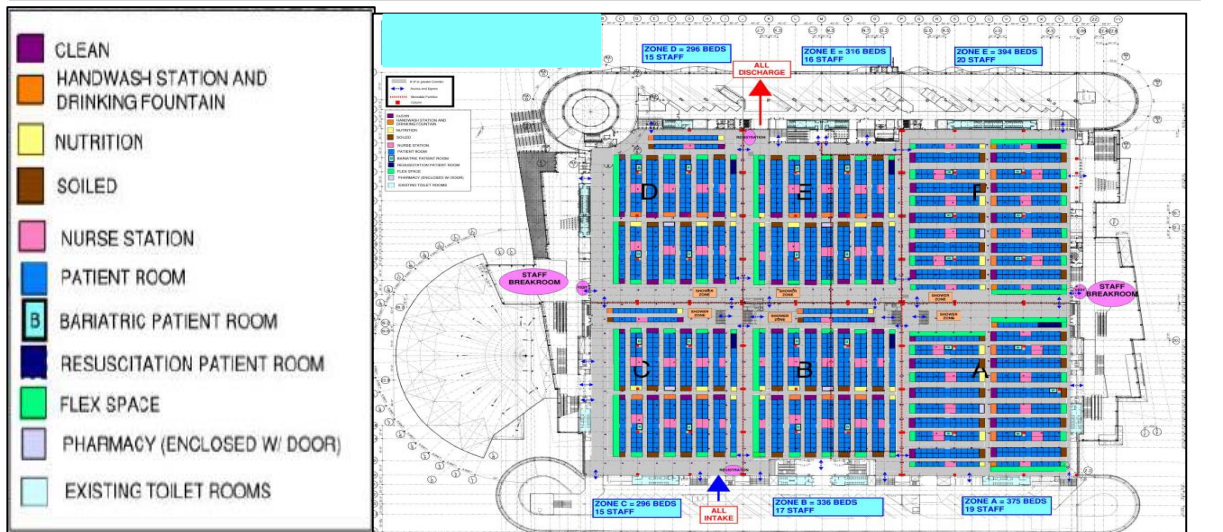
US Army Corps  
of Engineers.

### Alternate Care Facility Overview

Location: Denver, CO
MSC: South Pacific Division (SPD)
FEMA Region: VIII
Contractor: ECC Environmental LLC.
Type: Arena (A2HC)
Patient Type: COVID
Facility Size: 584,000 SF
Bed Capacity: 1,243
Address: 700 14 <sup>th</sup> St., Denver, CO 80202



### Plans

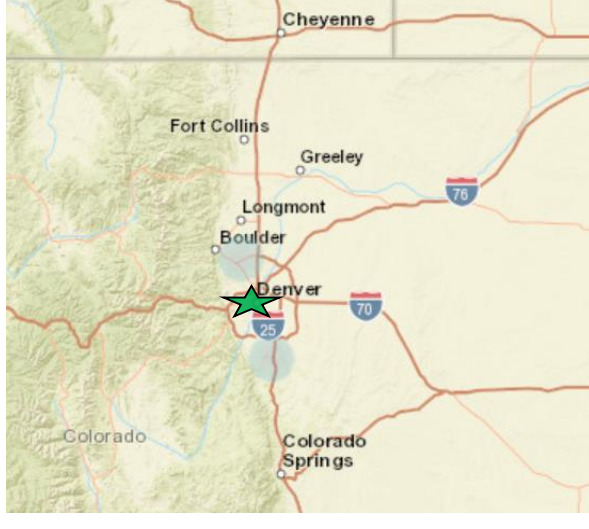


### Timeline

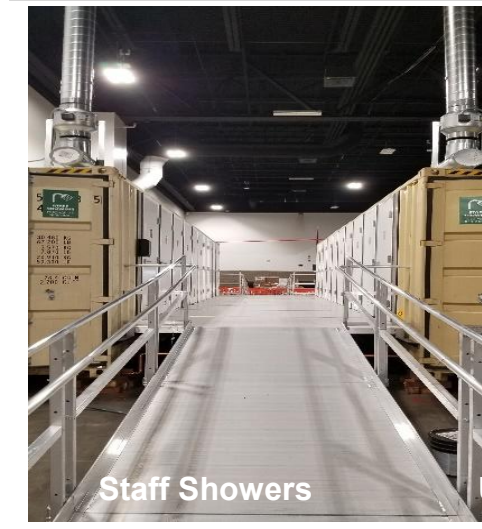
Assessment MA received	19 MAR 20
Construction MA received	01 APR 20
Contract Awarded	05 APR 20
Construction Start	09 APR 20
Contractual Completion	27 APR 20
Estimated Completion	27 APR 20
Actual Completion	24 APR 20
Total Construction Duration	16 Days

Notes: 100% Complete;

### Projected Bed Shortfall 07 JUN – 14 JUN



### In Progress Photos



Staff Showers





### Alternate Care Facility Overview

Location: Old Westbury, NY
MSC: North Atlantic Division (NAD)
FEMA Region: II
Contractor: AECOM Technical Services, Inc.
Type: Arena (A2HC)
Patient Type: COVID & NON-COVID
Facility Size: 207,000 SF
Bed Capacity: 1,024
Address: 223 Store Hill Road, Old Westbury, NY 11568



### Plans

**Plans Key:**  
 Blue = COVID ventilator-capable layout; 699 total beds  
 Blue w/ red stripes: COVID non-ventilator capable layout; 221 total beds  
 Orange: Non-COVID; 104 total beds

920 COVID  
 104 NON-COVID



### Timeline

Assessment MA received	18 MAR 20
Construction MA received	23 MAR 20
Contract Awarded	29 MAR 20
Construction Start	31 MAR 20
Contractual Completion	27 APR 20
Estimated Completion	27 APR 20
Actual Completion	27 APR 20
Total Construction Duration	28 Days
Notes: 100% Complete;	

### Projected Bed Shortfall 07 JUN – 14 JUN



### In Progress Photos





# ST. FRANCIS HOSPITAL – TRENTON, NJ

## HOTEL TO HEALTHCARE (H2HC)

### Alternate Care Facility Overview

Location: Trenton, NJ
MSC: North Atlantic Division (NAD)
FEMA Region: II
Contractor: TDX Sand Point Services
Type: Hotel (H2HC)
Patient Type: COVID
Facility Size: 6,000 SF
Bed Capacity: 37
Address: 601 Hamilton Ave, Trenton, NJ 08629



### Plans

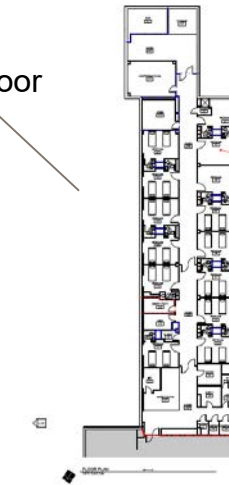
#### Notes

4<sup>th</sup> floor: 11 Rooms, 22 Beds

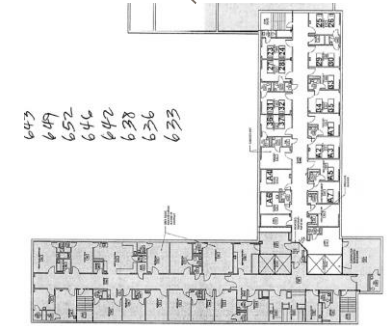
6<sup>th</sup> floor: 8 Rooms, 15 Beds

Total 37 Beds

4<sup>th</sup> Floor



6<sup>th</sup> Floor



### Timeline

Assessment MA received	23 MAR 20
Construction MA received	29 MAR 20
Contract Awarded	13 APR 20
Construction Start	14 APR 20
Contractual Completion	27 APR 20
Estimated Completion	28 APR 20
Actual Completion	28 APR 20
Total Construction Duration	14 Days
Notes: 100% Complete	

### Projected Bed Shortfall 07 JUN – 14 JUN



### Site Visit Photos







# ATSA BIYAAZH SCHOOL (NAVAJO NATION) – SHIPROCK, NM

## ARENA TO HEALTHCARE (A2HC)



US Army Corps  
of Engineers.

### Alternate Care Facility Overview

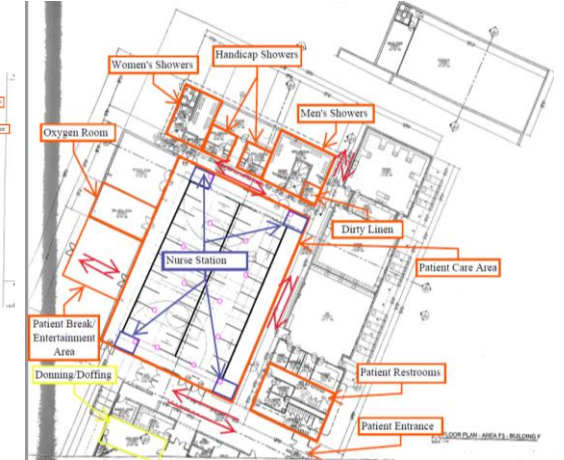
Location: Shiprock, NM
MSC: South Pacific Division (SPD)
FEMA Region: IX
Contractor: Four Winds Mechanical HTC/AC, Inc.
Type: Arena (A2HC)
Patient Type: NON-COVID
Facility Size: 7,400 SF
Bed Capacity: 40
Address: 1416 Pinon Drive, Shiprock, NM 87402



### Plans

#### Notes:

- Facility contains
- 40 patient cubes
- Plumbed oxygen to each cube
- Four nurses' stations
- No negative pressure



### Timeline

Assessment MA received	04 APR 20
Construction MA received	15 APR 20
Contract Awarded	17 APR 20
Construction Start	18 APR 20
Contractual Completion	01 MAY 20
Estimated Completion	29 APR 20
Actual Completion	29 APR 20
Total Construction Duration	14 Days

Notes: 100% Complete

### Projected Bed Shortfall 07 JUN – 14 JUN



### In Progress Photos







# NEW BRIDGE-BERGEN MED CTR PARKING LOT - PARAMUS, NJ

## ARENA TO HEALTHCARE (A2HC)



US Army Corps  
of Engineers.

### Alternate Care Facility Overview

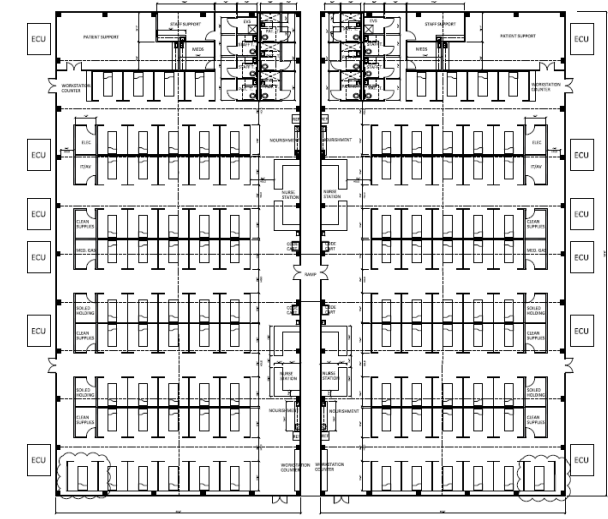
Location: Paramus, NJ
MSC: North Atlantic Division (NAD)
FEMA Region: II
Contractor: DynCorp International
Type: Arena (A2HC)
Patient Type: COVID
Facility Size: 27,000 SF
Bed Capacity: 100
Address: 230 E Ridgewood Ave, Paramus, NJ 07652



### Plans

#### Notes

Tent will be erected in parking lot to fit 100 beds.



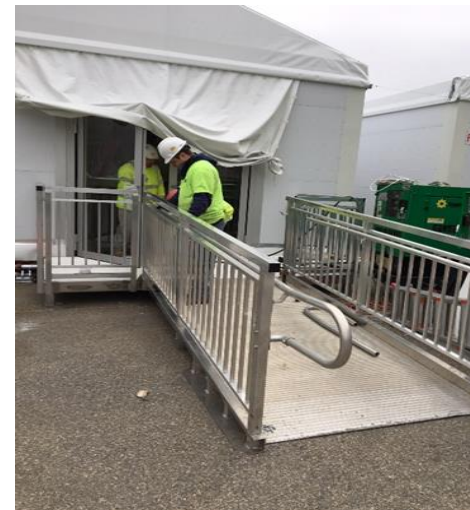
### Timeline

Assessment MA received	23 MAR 20
Construction MA received	29 MAR 20
Contract Awarded	14 APR 20
Construction Start	15 APR 20
Contractual Completion	29 APR 20
Estimated Completion	29 APR 20
Actual Completion	29 APR 20
Total Construction Duration	15 Days
Notes: 100% Complete;	

### Projected Bed Shortfall 07 JUN – 14 JUN



### In Progress Photos





# JAVITS CENTER – NEW YORK, NY

## ARENA TO HEALTHCARE (A2HC)

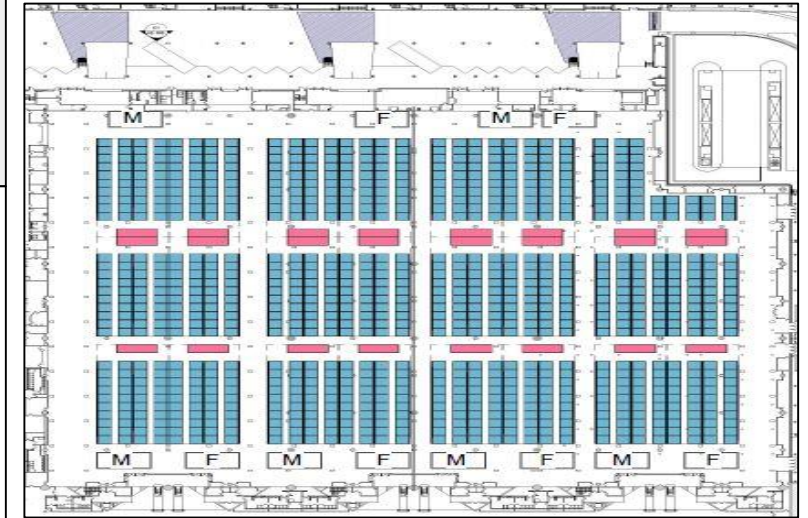
### Alternate Care Facility Overview

Location: New York, NY
MSC: North Atlantic Division (NAD)
FEMA Region: II
Contractor: NYCC Op. Corp.
Type: Arena (A2HC)
Patient Type: COVID
Facility Size: 470,000 SF
Bed Capacity: 2,106
Address: 655 West 34 <sup>th</sup> St., New York, NY 10014.



### Plans

**Plans Key:**  
Blue: Patient rooms / beds  
Pink/Purple: Nurse stations



**Notes**  
1<sup>st</sup> floor: 652 beds with 1,304 bed surge capacity  
3<sup>rd</sup> Floor: 946 bed with 1,892 bed surge capacity

Also includes 508 beds with 1,016 bed surge capacity (FMS area)

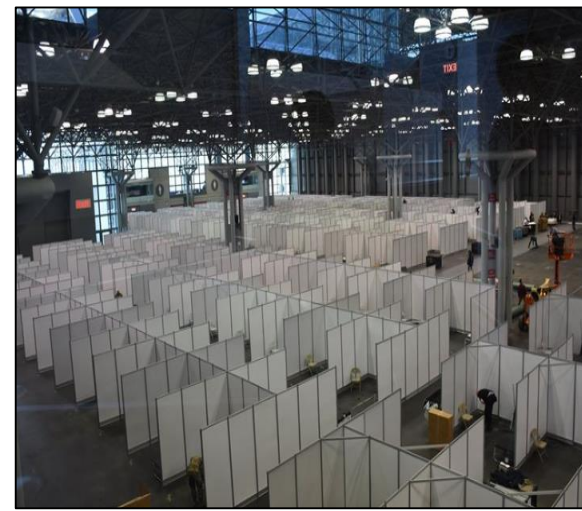
### Timeline

Assessment MA received	22 MAR 20
Construction MA received	23 MAR 20
Contract Awarded	25 MAR 20
Construction Start	30 MAR 20
Contractual Completion	30 APR 20
Estimated Completion	30 APR 20
Actual Completion	24 APR 20
Total Construction Duration	26 Days
<b>Notes:</b> 100% Complete; First patient arrived 11 APR 20.	

### Projected Bed Shortfall 07 JUN – 14 JUN



### In Progress Photos





### Alternate Care Facility Overview

Location: Loveland, CO
MSC: South Pacific Division (SPD)
FEMA Region: VIII
Contractor: AECOM Tech. Services LLC
Type: Arena (A2HC)
Patient Type: COVID
Facility Size: 374,000 SF
Bed Capacity: 192
Address: 5280 Arena Cir, Loveland, CO 80538



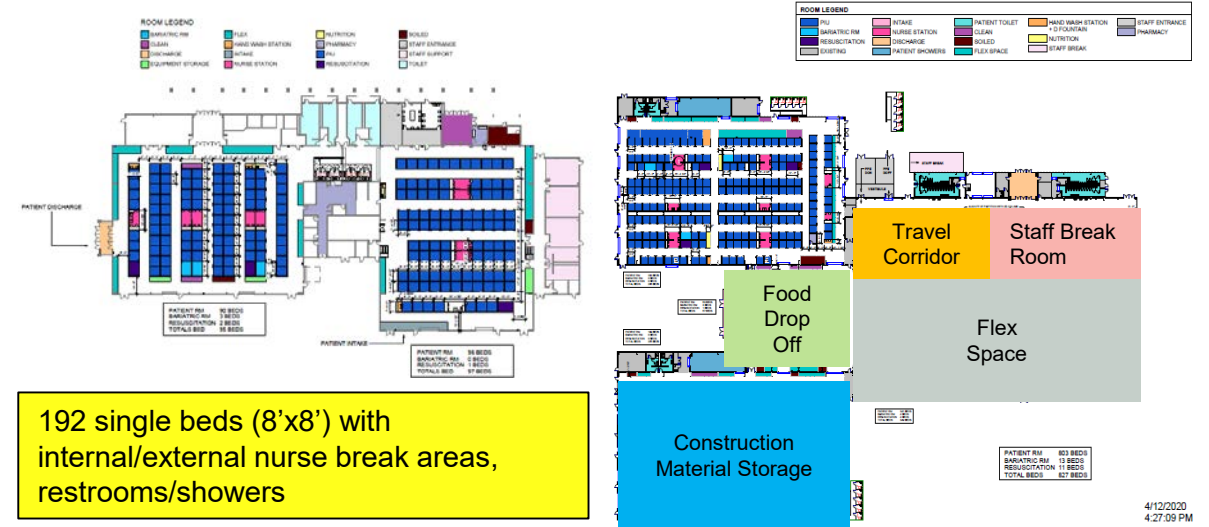
### Timeline

Assessment MA received	03 APR 20
Construction MA received	10 APR 20
Contract Awarded	08 APR 20
Construction Start	11 APR 20
Contractual Completion	10 MAY 20
Estimated Completion	01 MAY 20
Actual Completion	01 MAY 20
Total Construction Duration	21 Days
Notes: 100% Complete	

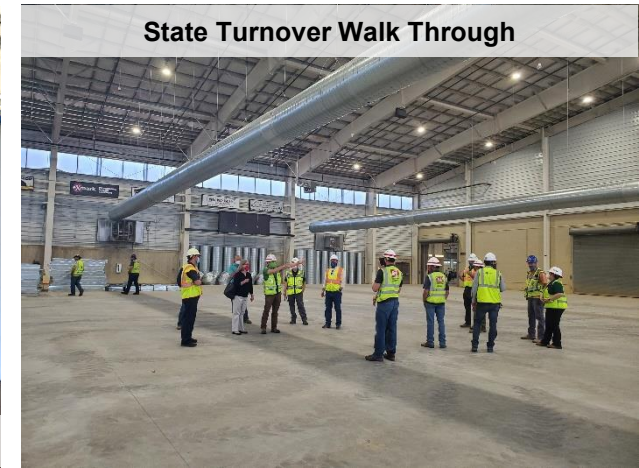
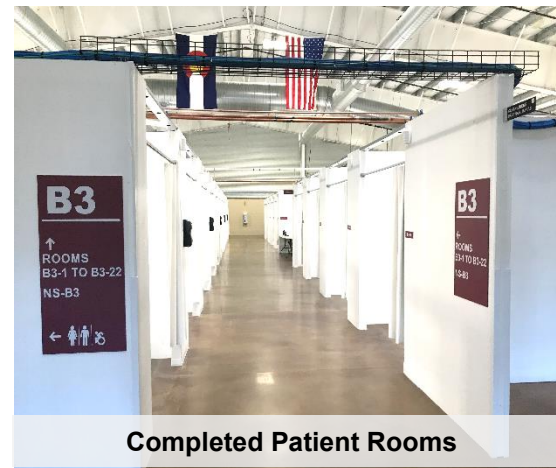
### Projected Bed Shortfall 07 JUN – 14 JUN



### Plans



### In Progress Photos







# CHINLE COMMUNITY CENTER (NAVAJO NATION) – CHINLE, AZ

## ARENA TO HEALTHCARE (A2HC)



US Army Corps of Engineers

### Alternate Care Facility Overview

Location: Chinle, AZ
MSC: South Pacific Division (SPD)
FEMA Region: IX
Contractor: Weil Construction, Inc.
Type: Arena (A2HC)
Patient Type: NON-COVID
Facility Size: 15,000 SF
Bed Capacity: 50
Address: US 191, Mile 448, Chinle, AZ, 86503



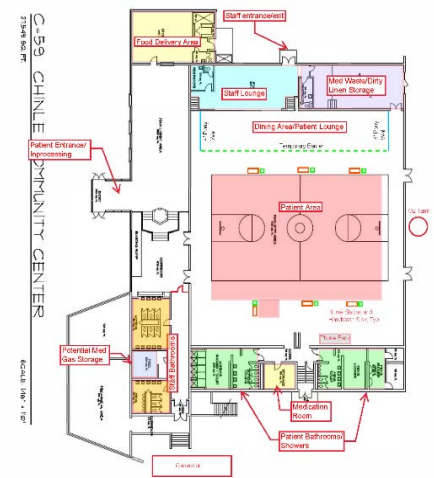
### Plans

**Notes:**

- Facility will contain
- 50 patient cubes
- Plumbed oxygen to each cube
- Six nurses' stations
- No negative pressure



\*Staff showers to be located at Wildcat Den



### Timeline

Assessment MA received	04 APR 20
Construction MA received	15 APR 20
Contract Awarded	17 APR 20
Construction Start	18 APR 20
Contractual Completion	01 MAY 20
Estimated Completion	01 MAY 20
Actual Completion	01 MAY 20
Total Construction Duration	14 Days

**Notes:** 100% Complete

### Projected Bed Shortfall 07 JUN – 14 JUN



### In Progress Photos







US Army Corps  
of Engineers.

# EAST ORANGE GENERAL HOSPITAL – EAST ORANGE, NJ

## HOTEL TO HEALTHCARE (H2HC)



### Alternate Care Facility Overview

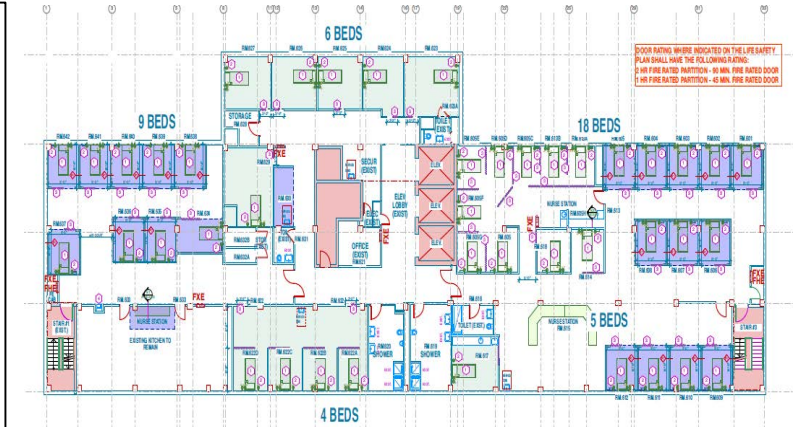
Location: East Orange, NJ
MSC: North Atlantic Division (NAD)
FEMA Region: II
Contractor: Cutting Edge LLC
Type: Hotel (H2HC)
Patient Type: COVID
Facility Size: 40,000 SF
Bed Capacity: 250
Address: 240 Central Ave, East Orange, NJ 07018



### Plans

#### Notes

6 floors planned for use for capacity totaling 250 beds



### Timeline

Assessment MA received	23 MAR 20
Construction MA received	29 MAR 20
Contract Awarded	07 APR 20
Construction Start	09 APR 20
Contractual Completion	05 MAY 20
Estimated Completion	05 MAY 20
Actual Completion	03 MAY 20
Total Construction Duration	25 Days

### Projected Bed Shortfall 07 JUN – 14 JUN



### In Progress Photos







# WALTER E. WASHINGTON CONV. CNTR – WASHINGTON, D.C.

## ARENA TO HEALTHCARE (A2HC)



US Army Corps  
of Engineers.

### Alternate Care Facility Overview

Location: Walt. Wash. Conv. Center
MSC: North Atlantic Division (NAD)
FEMA Region: III
Contractor: Hensel Phelps Construction Co.
Type: Arena (A2HC)
Patient Type: COVID & NON-COVID
Facility Size: 2,300,000 SF
Beds Capacity: 443
Address: 801 Mt Vernon PL. NW, Washington, D.C. 20001



### Plans

#### Plans Key:

Set up beds on the Lower level (Hall A) only.

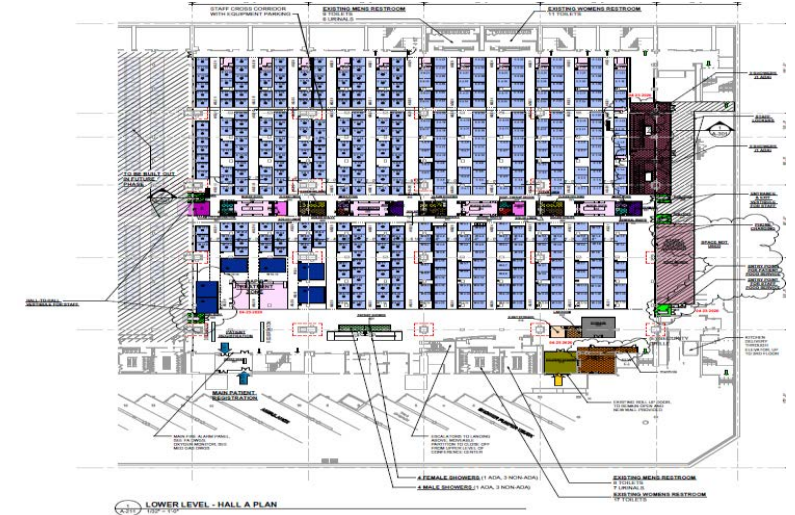
#### Notes:

29 APR 20: Contract definitized

Executed changes AA, AB, AC, and AD

11 MAY 20: Press conference with DC mayor

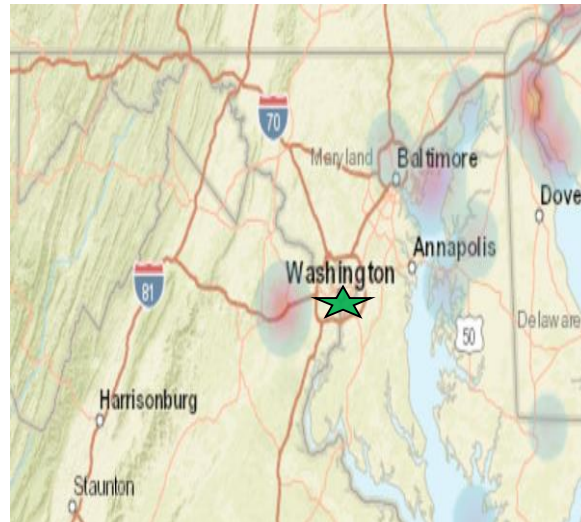
12 MAY 20: AAR



### Timeline

Assessment MA received	17 MAR 20
Construction MA received	07 APR 20
Contract Awarded	16 APR 20
Construction Start	22 APR 20
Contractual Completion	08 MAY 20
Estimated Completion	08 MAY 20
Actual Completion	08 MAY 20
Total Construction Duration	17 Days
<b>Notes:</b> 100% Complete	

### Projected Bed Shortfall 07 JUN – 14 JUN



### In Progress Photos







# 210 ARNG REGIONAL TRAINING INSTITUTE – ST. CROIX, USVI

## HOTEL TO HEALTHCARE (H2HC)



US Army Corps  
of Engineers.

### Alternate Care Facility Overview

Location: St. Croix, USVI
MSC: South Atlantic Division (SAD)
FEMA Region: II
Contractor: CONTI Federal Services, LLC.
Type: Hotel (H2HC)
Patient Type: COVID
Facility Size: 44,788 SF
Bed Capacity: 24
Address: Rural Route #1 Box 9200 Kingshill, St Croix 00850 USVI






### Timeline

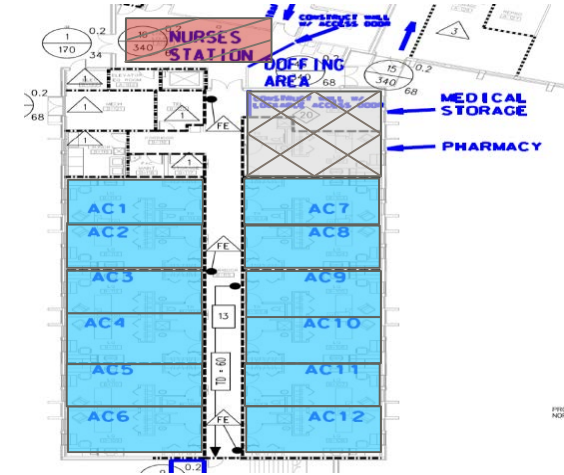
Assessment MA received	12 APR 20
Construction MA received	13 APR 20
Contract Awarded	17 APR 20
Construction Start	24 APR 20
Contractual Completion	26 MAY 20
Estimated Completion	08 MAY 20
Actual Completion	08 MAY 20
Total Construction Duration	15 Days
<u>Notes:</u> 100% Complete;	

### Projected Bed Shortfall 07 JUN – 14 JUN



### Plans

-  Nurse Station
-  Double Occupancy Acute Care Rooms
-  Admin / Storage Area

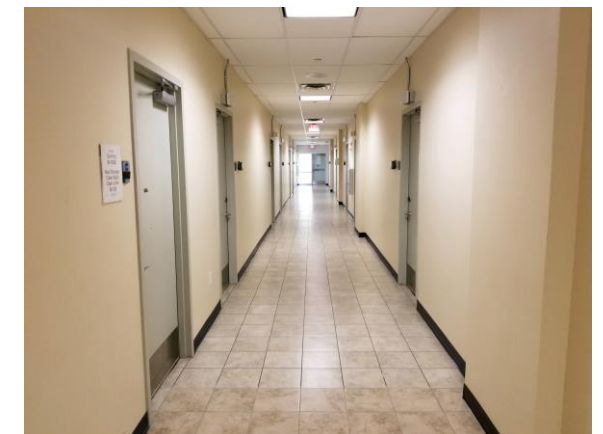


First Floor

### In Progress Photos



Nurse Cleaning Area



Finalized Hallway with Patient Rooms





US Army Corps  
of Engineers.

# INTEGRIS BAPTIST - PORTLAND CAMPUS – OKC, OK

## HOTEL TO HEALTHCARE (H2HC)



### Alternate Care Facility Overview

Location: Oklahoma City, OK
MSC: Southwestern Division (SWD)
FEMA Region: VI
FEMA MATO (\$): \$2,281,693 (Definitized)
Type: Hospital
Patient Type: COVID
Facility Size: 400,000 SF
Beds: 110 beds
Address: 5501 N Portland, Oklahoma City, OK 73112
KTR: Manhattan Construction Company Award Amount: CLIN 2 = \$2.28M Definitization Date: 05MAY20 (After 1600 due to Congressional notification requirement)



### Timeline

Assessment MA received	10 APR 20
Construction MA received	23 APR 20
Contract Awarded	26 APR 20
Construction Start	27 APR 20
Contractual Completion	13 MAY 20
Estimated Completion	08 MAY 20
Actual Completion	08 MAY 20
Total Construction Duration	12 Days
Percent Complete	100%
<b>Notes:</b> All contractual requirements have been completed by the Contractor.	

### Projected Heat Map + 3 weeks

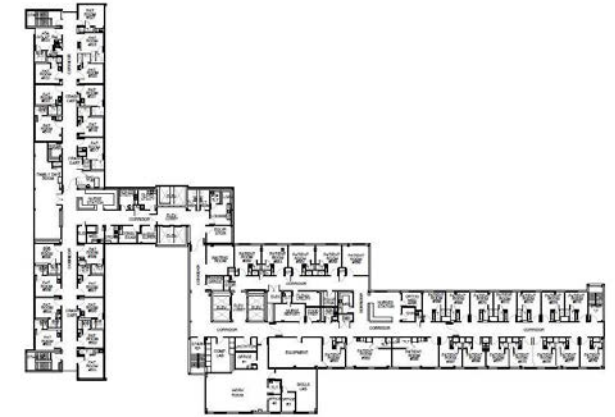


### Plans

#### Notes:

Construction is complete.

All Punch list items & Final cleaning completed.



Typical Upper Floor Plan

### In Progress Photos





# OSU MEDICAL CENTER – TULSA, OK

## EXISTING HOSPITAL

### Alternate Care Facility Overview

Location: Tulsa, OK
MSC: Southwestern Division (SWD)
FEMA Region: VI
FEMA MATO (\$): \$6,018,307 (Definitized)
Type: Hospital
Patient Type: COVID
Facility Size: 74,200 SF
Beds: 125 Rooms
Address: 744 W 9 <sup>th</sup> Street, Tulsa, OK 74127
KTR: Manhattan Construction Company Award Amount: CLIN 1 = \$6.02M Definitization Date: 05MAY20 (After 1600 due to Congressional notification requirement)

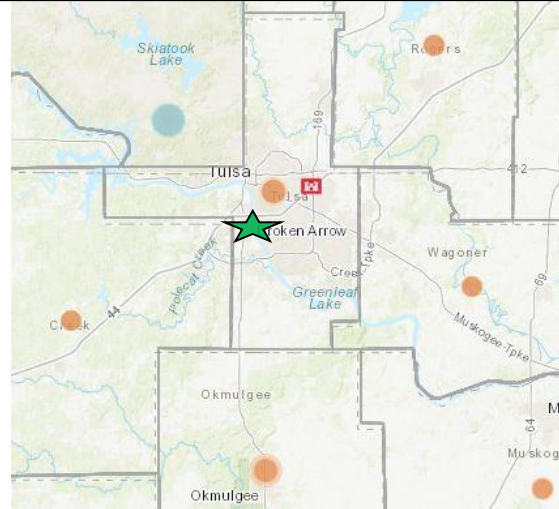


### Timeline

Assessment MA received	10 APR 20
Construction MA received	23 APR 20
Contract Awarded	26 APR 20
Construction Start	27 APR 20
Contractual Completion	13 MAY 20
Estimated Completion	10 MAY 20
Actual Completion	10 MAY 20
Total Construction Duration	14 Days
Percent Complete	100%

**Notes:** All contractual requirements have been completed by the Contractor.

### Projected Heat Map + 3 weeks



### Plans

#### Notes:

Construction is complete.

All punch list items & final cleaning have been completed and the substantial completion letter has been sent to the contractor.

Minor training on new equipment continues for facility personnel.



Tele-health Floor Plan

Typical Floor Plan

### In Progress Photos





# EUGENE RIVER AVENUE FACILITY – EUGENE, OR

## HOTEL TO HEALTHCARE (H2HC)

### Alternate Care Facility Overview

Location: Eugene, OR
MSC: Northwest Division (NWD)
FEMA Region: X
Contractor: Turner Construction Company
Type: Hotel (H2HC)
Patient Type: COVID
Facility Size: 18,550 SF
Bed Capacity: 42
Address: 100 River Ave, Eugene, OR 97404



### Timeline

Assessment MA received	03 APR 20
Construction MA received	16 APR 20
Contract Awarded	17 APR 20
Construction Start	18 APR 20
Contractual Completion	15 MAY 20
Estimated Completion	13 MAY 20
Actual Completion	13 MAY 20
Total Construction Duration	26 Days
Notes: 100% Complete	

### Projected Bed Shortfall 07 JUN – 14 JUN



### Plans

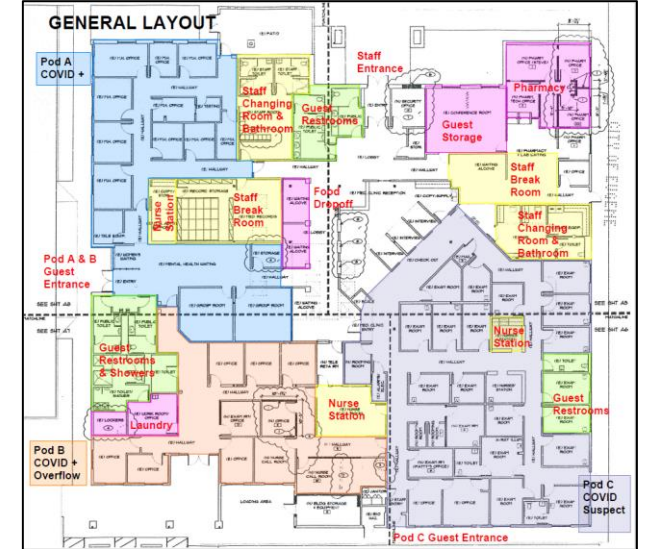
#### Notes:

GENERAL LAYOUT (right)

#### Scope Items:

- Utility upgrade/repair of HVAC/elec./plumbing systems
- Interior renovation of patient/staff/bath rooms
- Upgrade of nurse call system and IT infrastructure
- Upgrade of interior/exterior security features
- Repair existing ext. fencing
- Partitions (COVID/presumed COVID)

Note: COVID/presumed COVID separated by walls/secured doors and constructed partitions



### In Progress Photos







US Army Corps of Engineers.

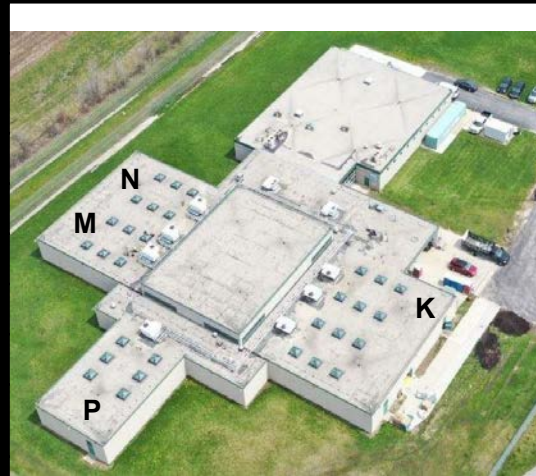


# LOTTER BUILDING MILWAUKEE COUNTY HOC – FRANKLIN, WI HOTEL TO HEALTHCARE (H2HC)



## Alternate Care Facility Overview

Location: Franklin, WI
MSC: Mississippi Valley Div (MVD); Executing: Great Lakes and River Div (LRD)
FEMA Region: V
Contractor: GILBANE
Type: (H2HC)
Patient Type: COVID-19
Facility Size: 17,500 SF
Bed Capacity: 120 (30 low acuity / 90 non acute)
Address: 8885 S. 68 <sup>th</sup> Street, West Allis, WI 53214



## Non-ICU Bed Projection + 30 Days



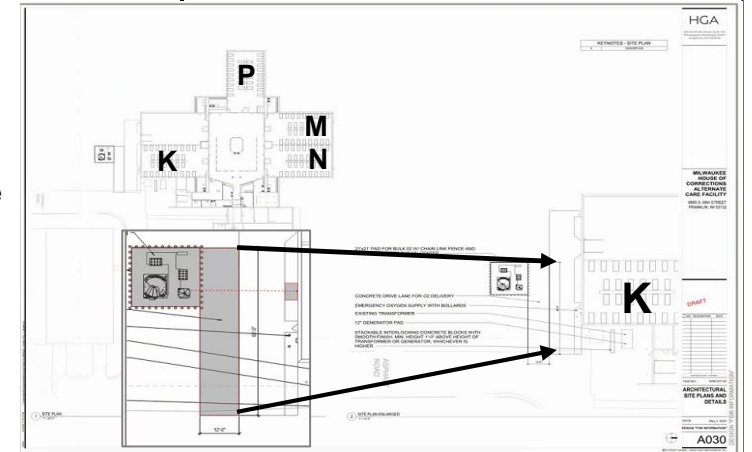
## Timeline

Assessment MA received	17 APR 20
Construction MA received	30 APR 20
Contract Awarded	30 APR 20
Construction Start	04 MAY 20
Required Delivery	29 May 20
Estimated Completion	21 MAY 20
Actual Completion	
Total Construction Days	17 Days
<b>Notes:</b> 100% complete 30 Day period of performance	

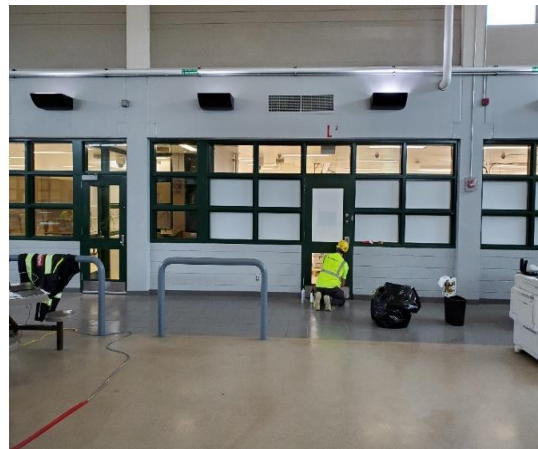
## Plans

### Plans Key:

- 30 Beds Low-Acuity (K)
- In-Line Bulk Oxygen (K)
- 90 Beds Non-Acute (M, N, P - 30 Beds Each)
- Modify all Dorms to Include Showers
- New 150K Back-Up Generator/ATS
- Modify Staff Support Areas
- Service HVAC and Adjust for Negative Pressure



## In Progress Photos



Completing window "frosting" for the print shop



HOC Staff transporting bunks into the dormitories





# KALISPELL REGIONAL MEDICAL CENTER – KALISPELL, MT

## ARENA TO HEALTHCARE (A2HC)



US Army Corps  
of Engineers.

### Alternate Care Facility Overview

Location: Kalispell, MT
MSC: Northwestern Division (NWD)
FEMA Region: VIII
Contractor: TBD
Type: Arena (A2HC)
Patient Type: NON-COVID
Facility Size: 26,250 SF
Bed Capacity: 100
Address: 310 Sunnyview Lane, Kalispell, MT 59901

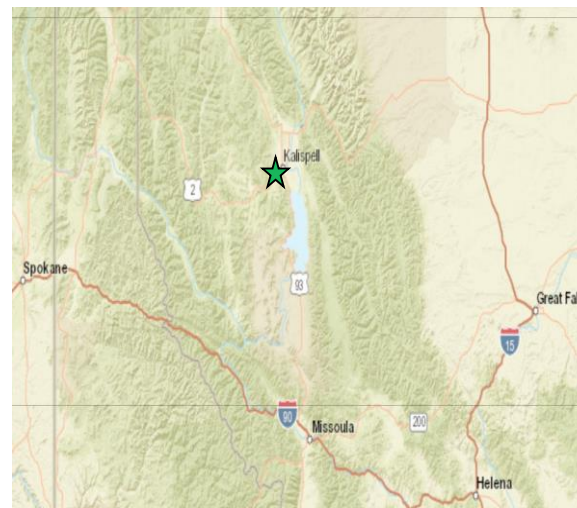


310 Sunnyview Lane, Kalispell, MT 59901

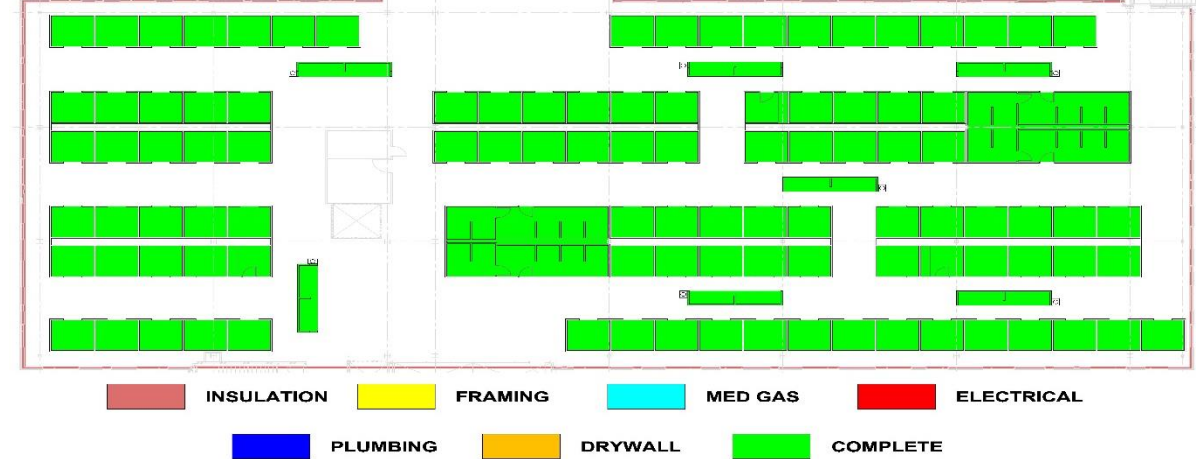
### Timeline

Assessment MA received	18 MAR 20
Construction MA received	15 APR 20
Contract Awarded	05 MAY 20
Construction Start	06 MAY 20
Required Delivery	26 MAY 20
Estimated Completion	26 MAY 20
Actual Completion	24 MAY 20
Total Construction Duration	21 Days
<b>Notes: 100% Complete</b>	

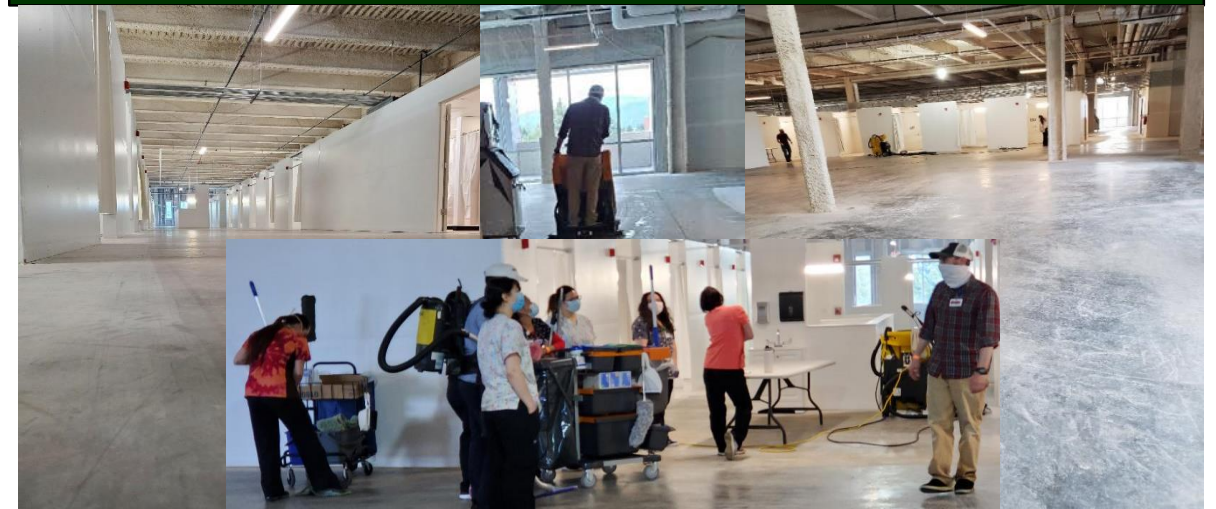
### Projected Bed Shortfall 07 JUN – 14 JUN



### Plans



### In Progress Photos







US Army Corps  
of Engineers.

# NASHVILLE GENERAL HOSPITAL – NASHVILLE, TN

## HOSPITAL TO HEALTHCARE (H2HC)



### Alternate Care Facility Overview

Location: Nashville, TN
MSC: Great Lakes & Ohio River Div. (LRD)
FEMA Region: IV
Contractor: Turner Construction Company (TCCo)
Type: Hospital (H2HC)
Patient Type: COVID
Facility Size: 26,292 sq-ft
Beds: 67
Address: 1818 Albion St. Nashville, TN 37208



### Plans

#### Plans Key:

Patient Spaces

Nursing Stations

#### Notes:

**Left:** 2nd Floor – 27 Patient Care Spaces

**Right:** 8th Floor – 40 Patient Care Spaces



### Timeline

Assessment Completed	10 APR 20
MATO received	01 MAY 20
Contract Awarded	01 MAY 20
Construction Start	04 MAY 20
Required Delivery	29 MAY 20
Estimated Completion	29 MAY 20
Actual Completion	TBD
Total Days	28

### Projected Bed Shortfall 31 May – 07 June



### In Progress Photos



1) Members of TCCo, USACE, STREAM, NGH, and State Department of Health walked the space for a joint review. 2) Floors waxed and curtains are displayed.

Last 24: 100% Complete. Testing and balancing continues on the 8th floor as well as focusing on the minor punch list.



# ST. LUKE'S MEDICAL CENTER – PHOENIX, AZ

## HOTEL TO HEALTHCARE (H2HC)

### Alternate Care Facility Overview

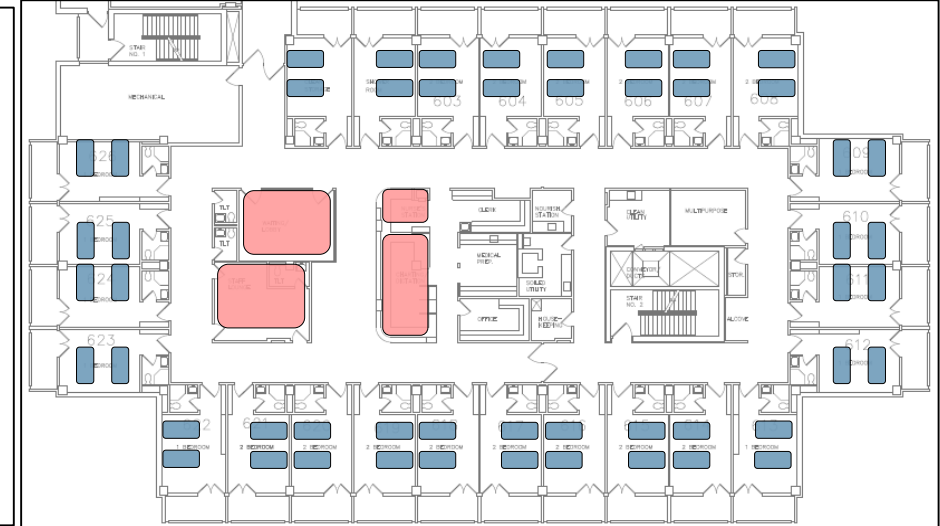
Location: Phoenix, AZ
MSC: South Pacific Division (SPD)
FEMA Region: IX
Contractor: Aptim Fed. Serv., LLC
Type: Hotel (H2HC)
Patient Type: COVID
Facility Size: 219,000 SF
Bed Capacity: 254
Address: 1800 E Van Buren St., Phoenix, AZ 85006



### Plans

**Notes:**  
1 building with 7 patient floors, not all floors have the same layout. This is an example of the 7<sup>th</sup> Floor, that shows 2 beds per room, and 52 bed spaces. State ask is 254 beds

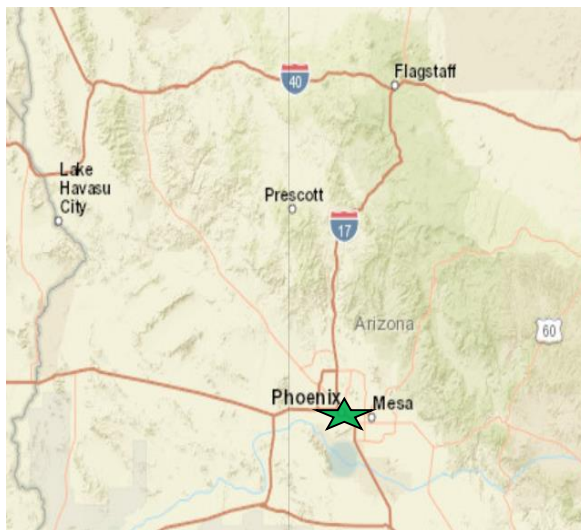
■ = bed space  
■ = staff/admin



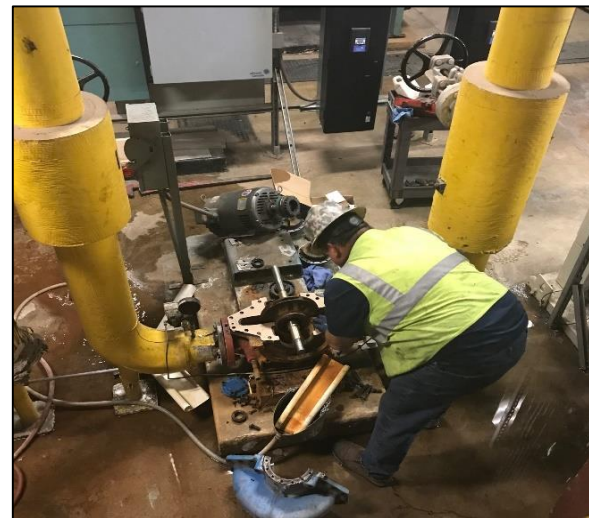
### Timeline

Assessment MA received	24 MAR 20
Construction MA received	31 MAR 20
Contract Awarded	11 APR 20
Construction Start	12 APR 20
Contractual Completion	31 MAY 20
Estimated Completion	31 MAY 20
Actual Completion	TBD
Total Construction Duration	50 Days

### Projected Bed Shortfall 07 JUN – 14 JUN



### In Progress Photos



**Notes:** 99% Complete; Construction for initial SOW was completed on 02 MAY. Work from add-ons/mods is currently ongoing an expected to be complete by 31 MAY 20.





US Army Corps  
of Engineers.

# COMMERCIAL APPEAL BUILDING – MEMPHIS, TN

## ARENA TO HEALTHCARE (A2HC)



### Alternate Care Facility Overview

Location: Memphis, TN
MSC: Great Lakes and River Div (LRD) Executing: Mississippi Valley Div (MVD)
FEMA Region: IV
Contractor: AECOM
Type: Arena (A2HC)
Patient Type: COVID-19
Facility Size: 140,000+/- sq ft
Beds: 401 (368 PCS, 33 PIU)
Address: 495 Union Ave, Memphis, TN 38103

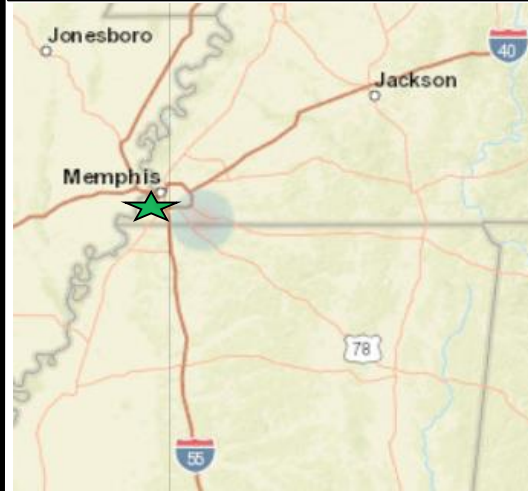


### Timeline

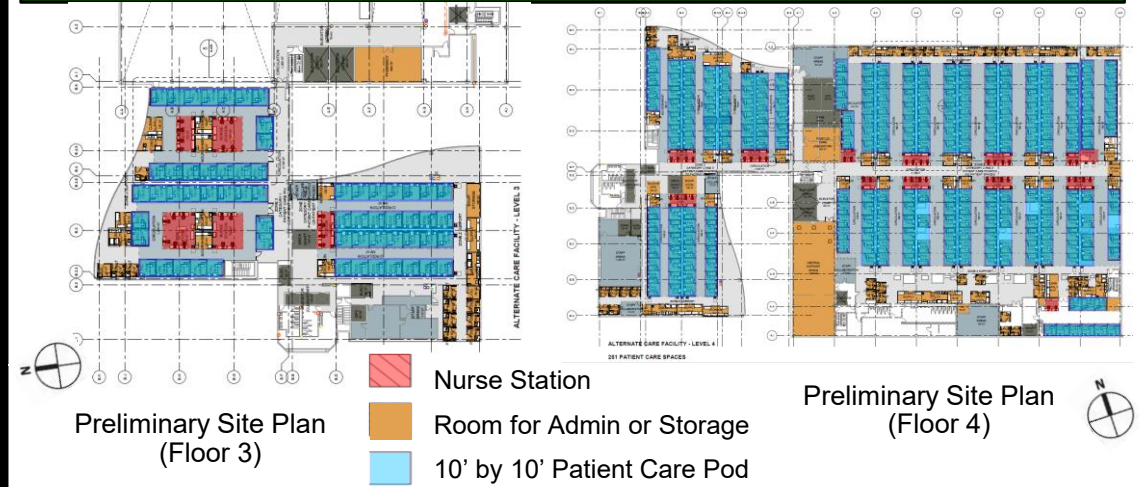
Assessment MA received	03 APR 20
Construction MA received	10 APR 20
Contract Awarded	16 APR 20
Construction Start	16 APR 20
Required Delivery	15 MAY 20
Estimated Completion	10 JUN 20
Actual Completion	
Total Construction	34 Days

Notes: 97.4% complete  
Beneficial occupancy by State, KTR continues to work punchlist items and HEPA MOD

### Projected Bed Shortfall 17-23 May



### Plans



### In Progress Photos



26MAY20: Contractors initiating work on HEPA Filter installation





US Army Corps  
of Engineers.

# MEMORIAL HOSPITAL OF TEXAS COUNTY – GUYMON, OK

## EXISTING HOSPITAL



### Alternate Care Facility Overview

Location: Guymon, OK
MSC: Southwestern Division (SWD)
FEMA Region: VI
FEMA MATO (\$): \$675,000
Type: Hospital
Patient Type: COVID
Facility Size: ~8000SF
Beds: 8 Rooms
Address: 520 Medical Drive, Guymon, OK 73942
KTR: Manhattan Construction Company Award Amount: \$475,000 Definitization Date: TBD



### Plans

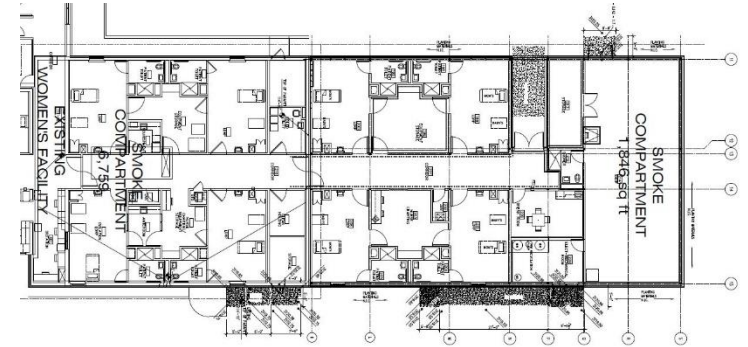
#### Notes:

Flooring crew began carpet demo with Vinyl floor installation slated after.

New desiccant drier being installed to address med-gas system deficiencies. Med-gas NFPA alarm repaired.

New ATS for emergency generator arrived & was placed in position.

Nurse call testing completed & is fully operational in patient care areas.



Floor Plan

### Timeline

Assessment MA received	19 MAY 20
Construction MA received	22 MAY 20
Contract Awarded	24 MAY 20
Construction Start	26 MAY 20
Contractual Completion	05 JUN 20
Estimated Completion	05 JUN 20
Actual Completion	XX JUN 20
Total Construction Duration	11 Days
Percent Complete	57%

Notes: CCTV rough-in was completed.

### Location Map



### In Progress Photos

